



**FORMATION TESTER  
TIME LOG  
BUILD-UP PLOTS**

COMPANY	ORIGIN ENERGY RESOURCES LIMITED		
WELL	CHILDERS COVE 1		
FIELD	ONSHORE OTWAY BASIN		
PROVINCE/COUNTRY	VICTORIA		
COUNTRY/STATE	AUSTRALIA		
LOCATION	38DEG29'31.96"S 142DEG44'46.66"E <b>FIELD PRINT</b>		
LSD	SEC	TWP	RGE
			Other Services MCG-MPD-MDN MMR-MDL-MSS
API Number	Permit Number PEP 154		
Permanent Datum	GROUND LEVEL, Elevation 50 metres		
Log Measured From	R. T. @ 5.3 METRE above Permanent Datum		
Drilling Measured From	R. T.		
Date	05-Oct-2005		
Run Number	FOUR		
Depth Driller	2658.00 metres		
Depth Logger	2618.50 metres		
First Reading	2617.10 metres		
Last Reading	2562.40 metres		
Casing Driller	544.50 metres		
Casing Logger	544.20 metres		
Bit Size	8.50 inches		
Hole Fluid Type	KCL/PHPA/POL		
Density / Viscosity	1.15 g/cc	59.00 CP	
PH / Fluid Loss	8.60	4.00 ml/30Min	
Sample Source	FLOWLINE		
Rm @ Measured Temp	0.65 @ 13.9	ohm-m	
Rmf @ Measured Temp	1.06 @ 13.9	ohm-m	
Rmc @ Measured Temp	0.53 @ 14.1	ohm-m	
Source Rmf / Rmc	FILTER	PRESS	
Rm @ BHT	0.09 @ 95.5	ohm-m	
Time Since Circulation	32 HOURS		
Max Recorded Temp	95.50	deg C	
Equipment Name	MFT		
Equipment / Base	17	SALE	
Recorded By	G. MCMANUS, B. MOSS		
Witnessed By	BRIAN WEB		
CIRC. STOP	13:00 3/10		

Elevations:	KB	51.50	metres
	DF	51.50	metres
	GL	46.20	metres

BOREHOLE RECORD		
Bit Size inches	Depth From metres	Depth To metres
8.500	544.50	2658.00

CASING RECORD				
Type	Size inches	Depth From metres	Shoe Depth metres	Weight pounds/ft
K-55	9.625	0.00	544.50	36.00

**REMARKS**

1) SOFTWARE ISSUE: JUN 17, 2004.  
 2) CUSTOMER SCALES AND INTERVALS LOGGED.  
 3) HFS, MCG, MFT RAN IN COMBINATION.  
 4) HARDWARE: MFT: 2 X BOWSPRING CENTRALISERS  
 MCG: 1 X BOWSPRING CENTRALISERS  
 5) SERVICE ORDER: 2072  
 6) RIG: CENTURY 7  
 7) DUE TO FAILURE OF PRIMARY MFT, MFT 17 USED IN PLACE. THIS LOG DISPLAYS MFT 17 DATA ONLY.

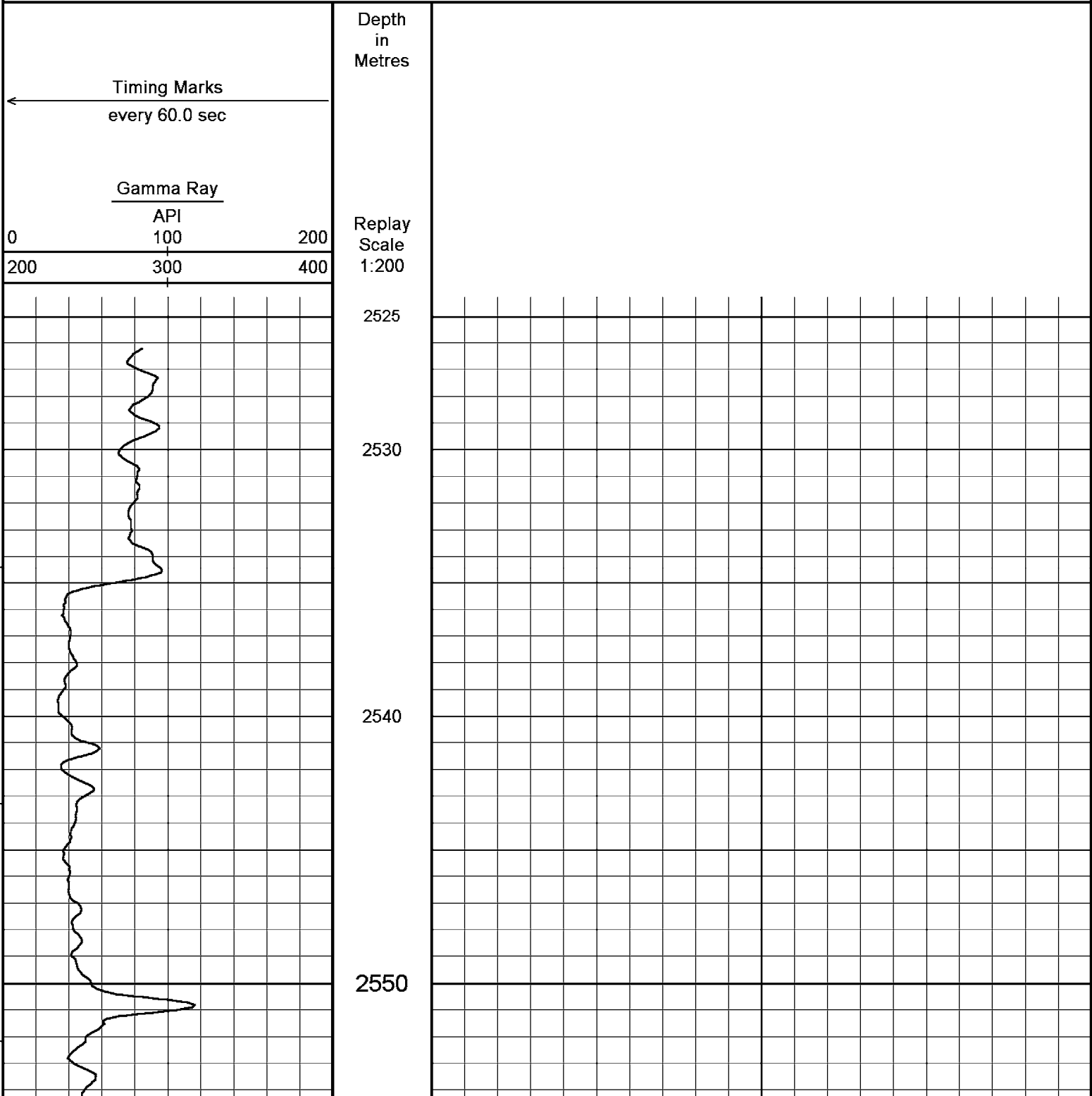
MFT / RFS - QUARTZ TEST SUMMARY										
Test No.	Depth metres	TVD metres	Hyd Pres Before psig	Drawdown Pressure 1 psig	Drawdown Pressure 2 psig	Final Shut- in Pressure psig	Hyd Pres After psig	Mobility 1 md/cp	Mobility 2 md/cp	Remarks
1	0.00	0.00	0.00	0.00	0.00	0.00	0.00	0.000	0.000	SURFACE CHECK
2	502.32	502.32	0.00	0.00	0.00	0.00	0.00	0.000	0.000	NO TEST RESULT
3	502.32	502.32	844.41	0.00	0.00	15.88	844.33	0.000	0.000	CASING CHECK
4	2562.41	2562.41	0.00	0.00	0.00	0.00	0.00	0.000	0.000	NO TEST RESULT

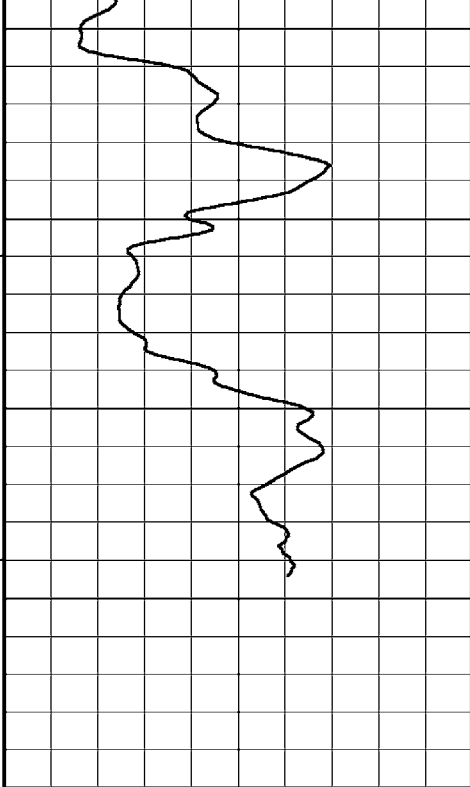
5	2562.41	2562.41	4296.73	0.00	0.00	3616.02	4297.18	0.000	0.000	GOOD TEST
6	2585.55	2585.55	4336.28	0.00	0.00	3615.43	4336.91	0.000	0.000	GOOD TEST
7	2589.92	2589.92	4340.26	0.00	0.00	86.01	4341.52	0.000	0.000	TIGHT TEST
8	2593.43	2593.43	4340.97	0.00	0.00	81.56	4342.81	0.000	0.000	TIGHT TEST
9	2596.65	2596.65	4342.19	0.00	0.00	76.54	4342.29	0.000	0.000	TIGHT TEST
10	2594.22	2594.22	4341.59	0.00	0.00	168.72	4341.57	0.000	0.000	TIGHT TEST
11	2590.51	2590.51	4341.19	0.00	0.00	157.92	4341.17	0.000	0.000	TIGHT TEST
12	2612.09	2612.09	4342.32	0.00	0.00	152.00	4342.44	0.000	0.000	TIGHT TEST
13	2611.90	2611.90	4341.97	0.00	0.00	152.12	4342.11	0.000	0.000	TIGHT TEST
14	2616.80	2616.80	4341.66	0.00	0.00	149.61	4342.61	0.000	0.000	TIGHT TEST
15	2617.11	2617.11	4342.25	0.00	0.00	145.53	4342.96	0.000	0.000	TIGHT TEST

All interpretations are opinions based on inferences from electrical or other measurements and we cannot, and do not, guarantee the accuracy or correctness of any interpretations, and we shall not, except in the case of gross or wilful negligence on our part, be liable or responsible for any loss, costs, damages or expenses incurred or sustained by anyone resulting from any interpretation made by any of our officers, agents or employees. These interpretations are also subject to our general terms and conditions in our price schedule.

**GAMMA PASS 3 @ 2570 m**

Depth Based Data - Maximum Sampling Increment 10.0cm  
 Plotted on 06-OCT-2005 13:46  
 Filename: C:\Data\Childers Cove\MCG098\_3.dta  
 Recorded on 05-OCT-2005 03:24  
 System Configuration Dates: Logged 17-JUN-2004: Plotted 23-AUG-2004:





2560

2570

2575

Depth  
in  
Metres

← Timing Marks  
every 60.0 sec

Gamma Ray  
API

0	100	200
200	300	400

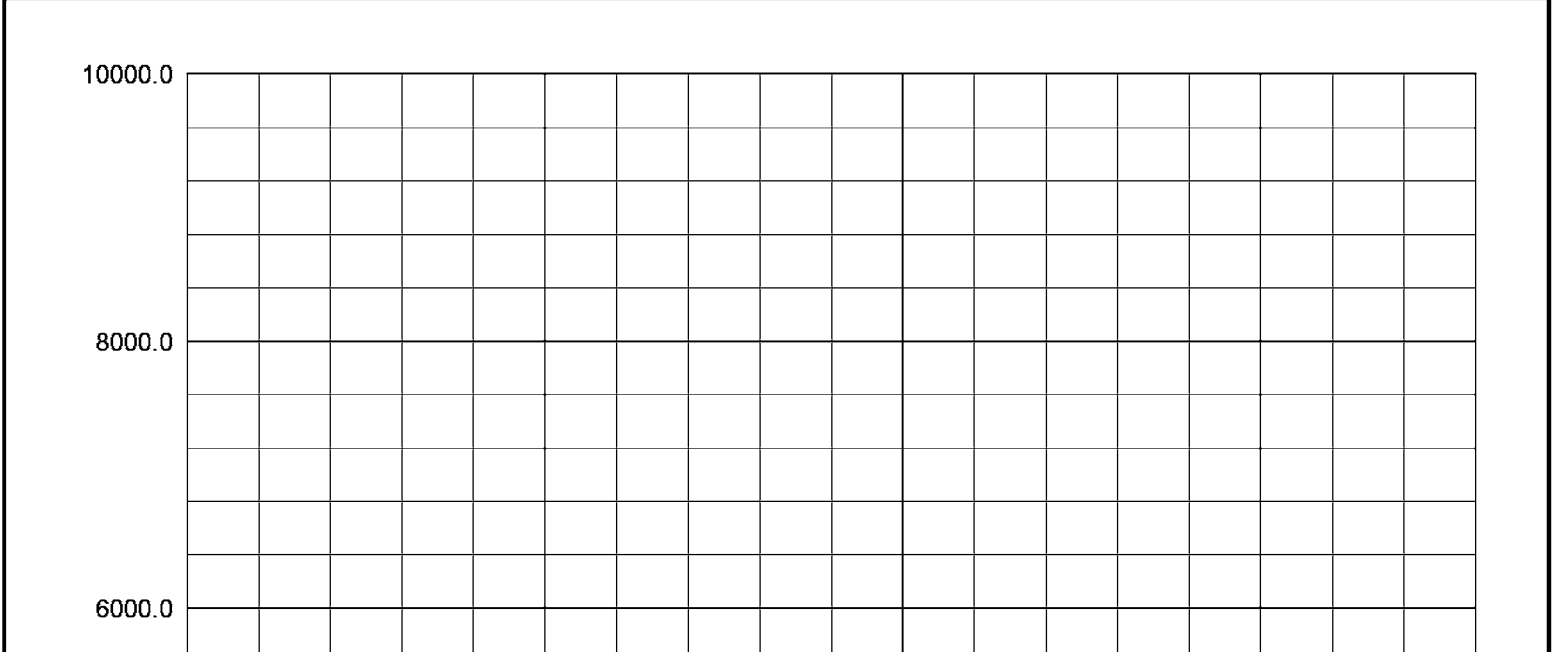
Replay  
Scale  
1:200

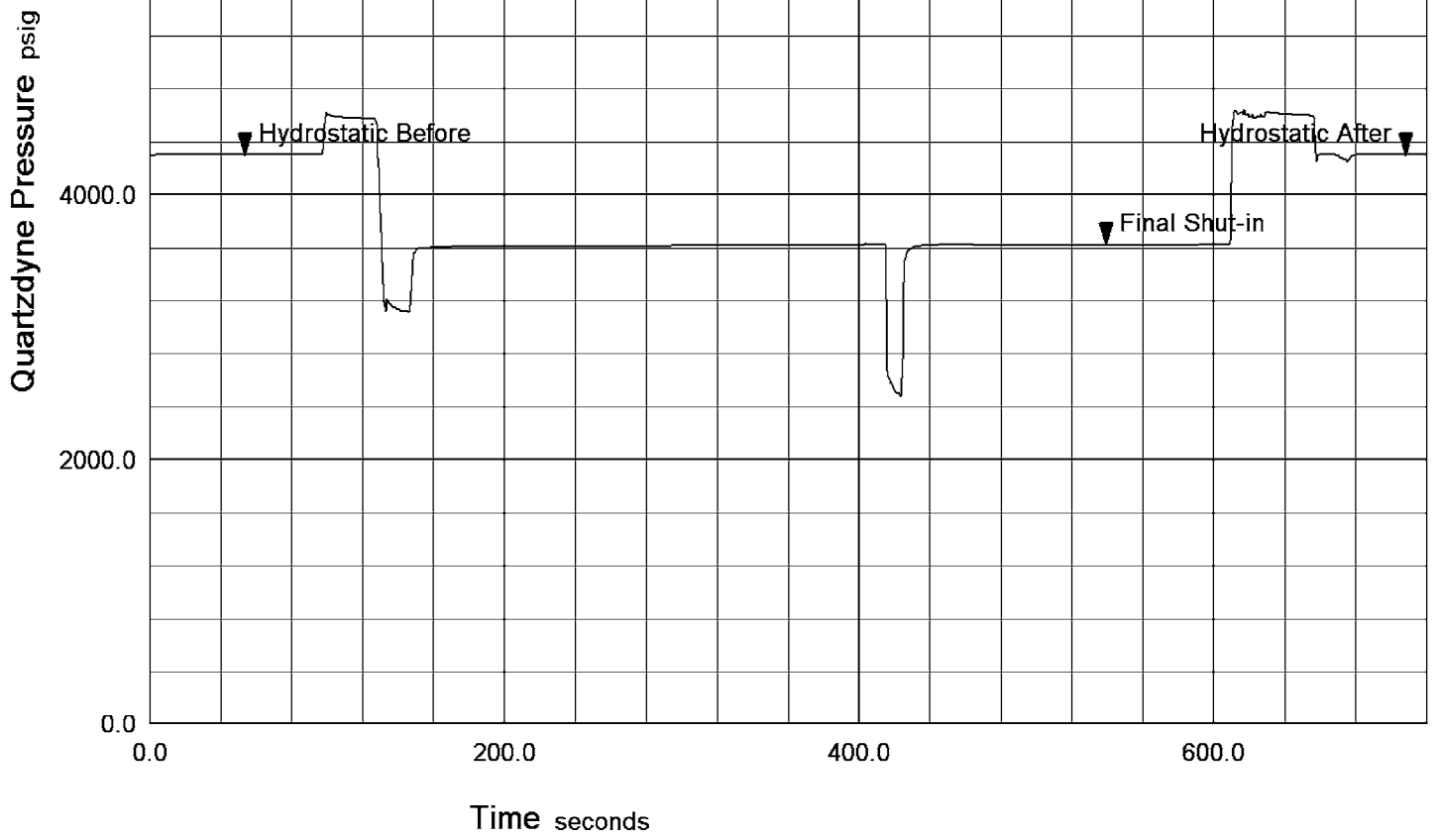
Depth Based Data - Maximum Sampling Increment 10.0cm  
 Filename: C:\Data\Childers Cove\MCG098\_3.dta  
 System Configuration Dates: Logged 17-JUN-2004: Plotted 23-AUG-2004:  
 Plotted on 06-OCT-2005 13:46  
 Recorded on 05-OCT-2005 03:24

↑ GAMMA PASS 3 @ 2570 m ↑

### Pressure - Time Plot

File: C:\Data\Childers Cove\MCG098MFT017\_18.dta  
 Run Id: Pretest 5 at 2562.41 m  
 Test Number: 5  
 File Date: 04-OCT-2005 21:03:50





Pretest 5 at 2562.41 m

Time Based Data - Notional Logging Speed 9.00 metres/min Plotted on 06-OCT-2005 13:46  
 Filename: C:\Data\Childers Cove\MCG098MFT017\_18.dta Recorded on 05-OCT-2005 03:37  
 System Configuration Dates: Logged 17-JUN-2004: Plotted 23-AUG-2004:

← Timing Marks every 60.0 sec

MFC Caliper inches  
6      11      16

---

Quartzdyne Pressure psi  
0      1500      3000  
3000      4500      6000

---

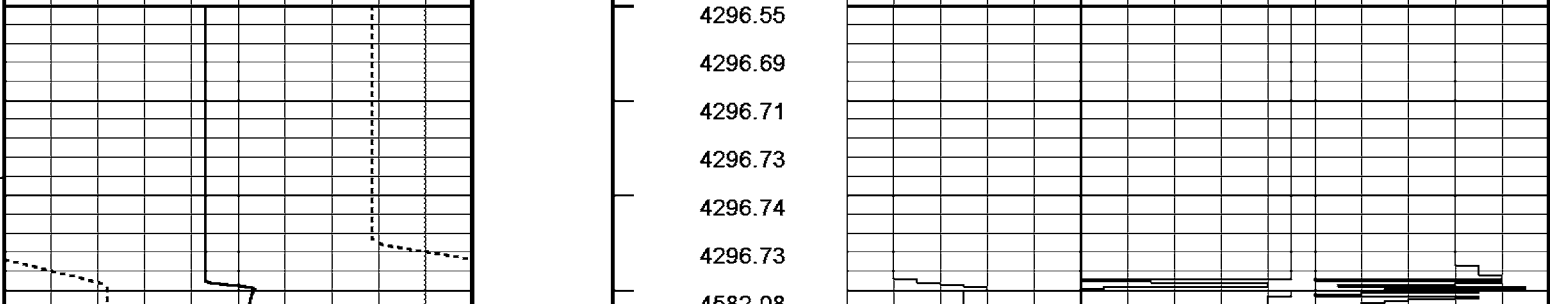
Piston Swept Volume cc  
45      20      -5

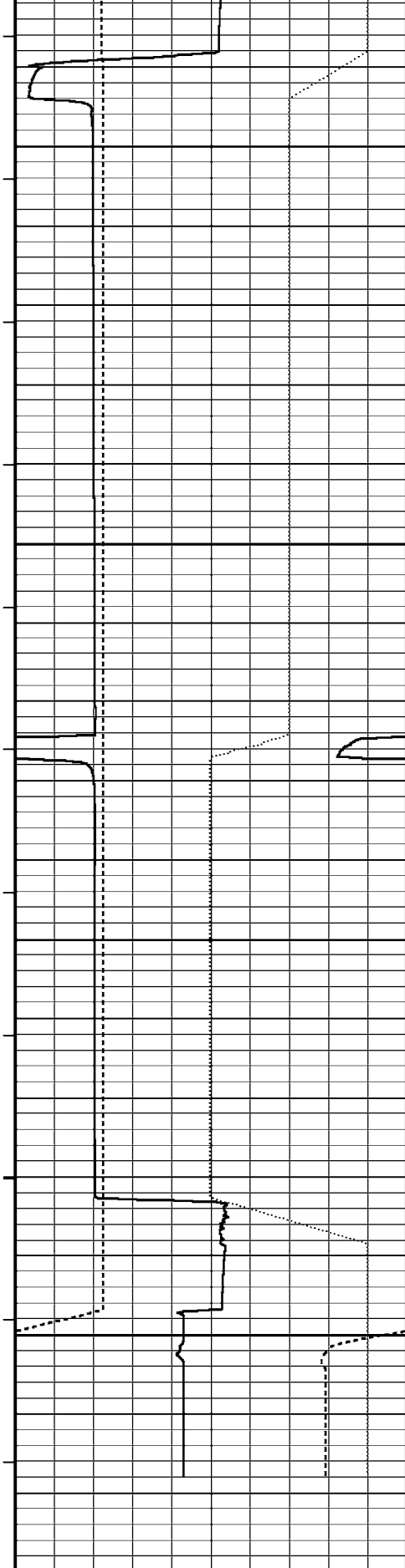
TPRE every 0.25 in

Replay Scale 1:400

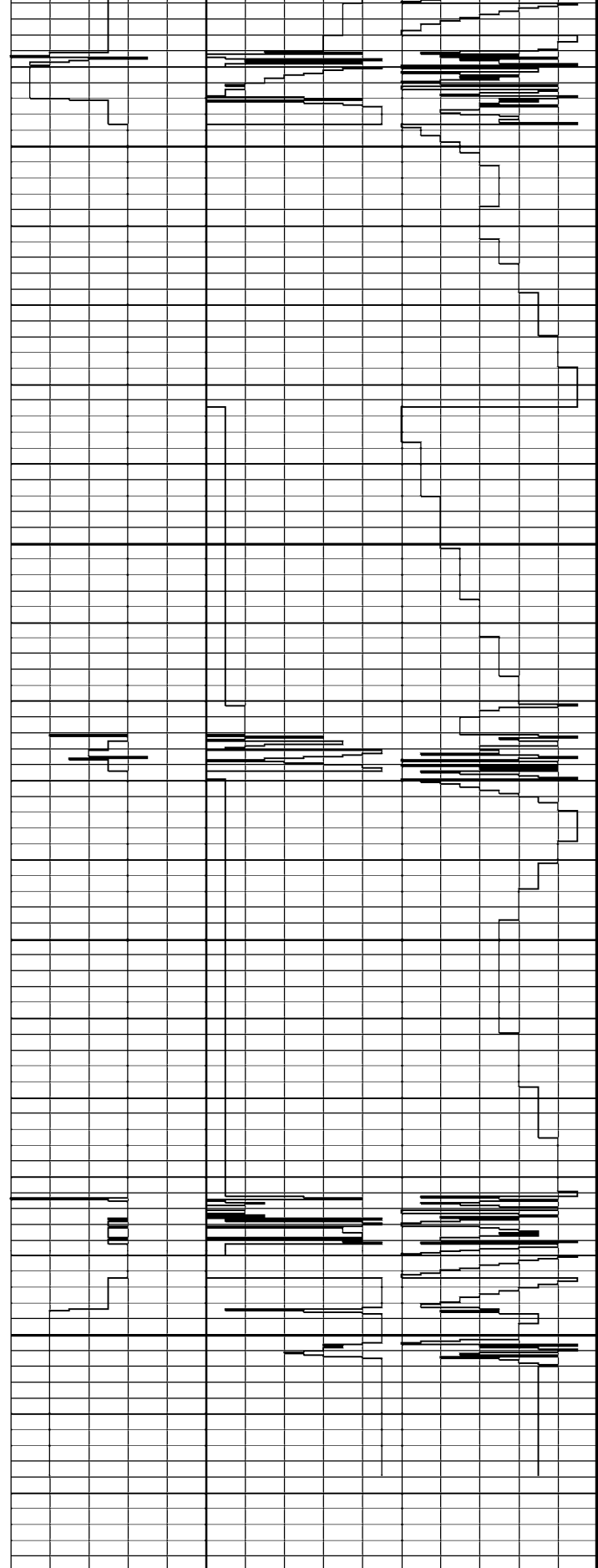
Quartzdyne Pressure psi every 0.25 in      0      10,0      10,0      10

Quartzdyne 100's      Quartzdyne 10's      Quartzdyne 1's  
 ---      ---      ---





4569.45	
13.37	3132.46
30.01	3595.42
46.72	3604.43
64.07	3605.32
80.71	3605.05
98.05	3606.64
114.76	3607.53
131.43	3608.85
148.76	3609.89
165.43	3611.00
182.77	3611.74
199.45	3612.52
216.11	3613.30
233.48	3614.11
250.12	3615.11
267.49	3616.27
284.17	3623.65
14.01	3568.94
31.34	3618.39
48.06	3618.77
65.37	3617.10
82.05	3615.87
98.74	3615.61
116.05	3615.84
132.73	3616.20
150.07	3617.00
166.76	3617.81
183.42	3618.56
7.39	4608.14
24.05	4616.21
41.39	4596.67
58.08	4296.94
74.71	4297.57
92.05	4297.12
	4297.19



← Timing Marks  
every 60.0 sec

MFC Caliper  
inches  
6 11 16

TPRE  
every  
0.25 in

Quartzdyne Pressure  
psi  
every 0.25 in

Quartzdyne 100's      Quartzdyne 10's      Quartzdyne 1's  
0      10 0      10 0      10

Quartzdyne Pressure

psi

0 1500 3000

3000 4500 6000

Piston Swept Volume

cc

45 20 -5

Replay  
Scale  
1:400

Time Based Data - Notional Logging Speed 9.00 metres/min

Plotted on 06-OCT-2005 13:46

Filename: C:\Data\Childers Cove\MCG098MFT017\_18.dta

Recorded on 05-OCT-2005 03:37

System Configuration Dates: Logged 17-JUN-2004: Plotted 23-AUG-2004:



Pretest 5 at 2562.41 m



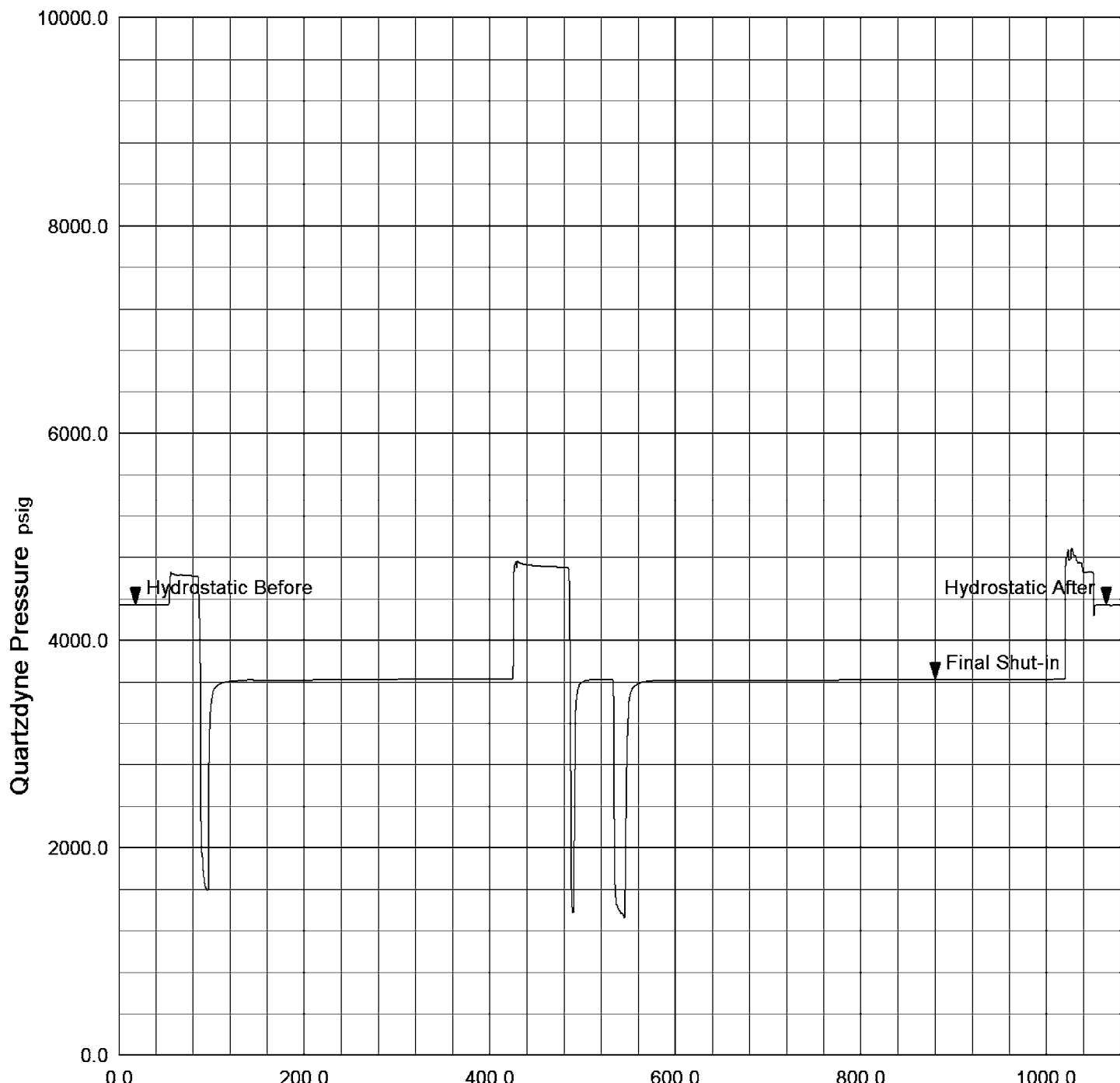
### Pressure - Time Plot

File: C:\Data\Childers Cove\MCG098MFT017\_19.dta

File Date: 04-OCT-2005 21:03:58

Run Id: Pretest 6 at 2585.55 m

Test Number: 6



Pretest 6 at 2585.55 m

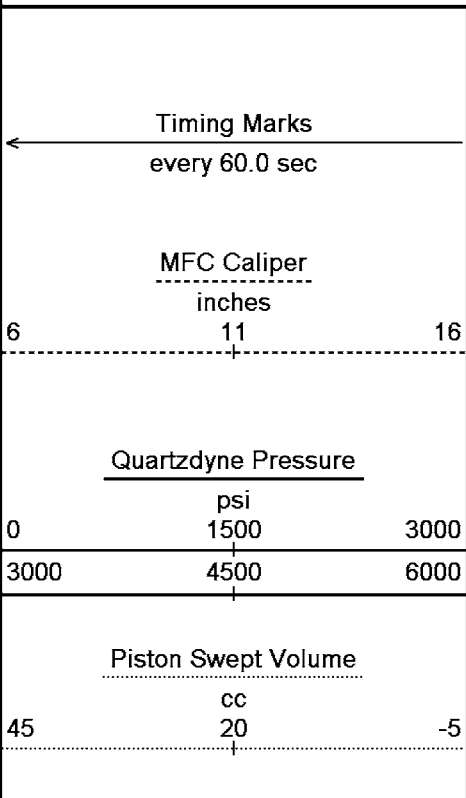
Time Based Data - Notional Logging Speed 9.00 metres/min

Plotted on 06-OCT-2005 13:46

Filename: C:\Data\Childers Cove\MCG098MFT017\_19.dta

Recorded on 05-OCT-2005 03:56

System Configuration Dates: Logged 17-JUN-2004: Plotted 23-AUG-2004:



TPRE every 0.25 in

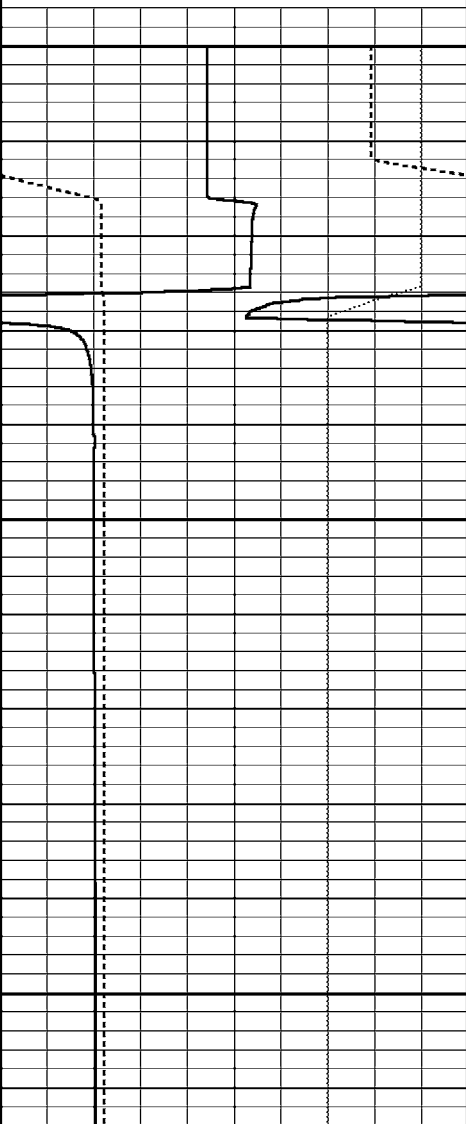
Quartzdyne Pressure psi every 0.25 in

Quartzdyne 100's

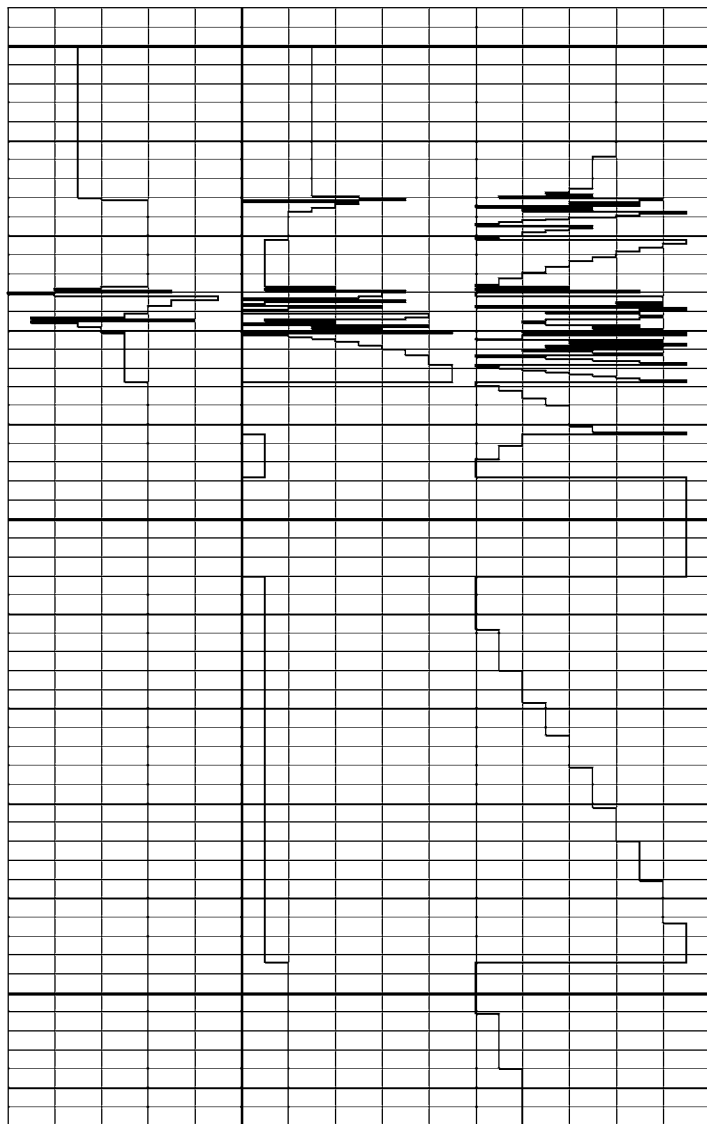
Quartzdyne 10's

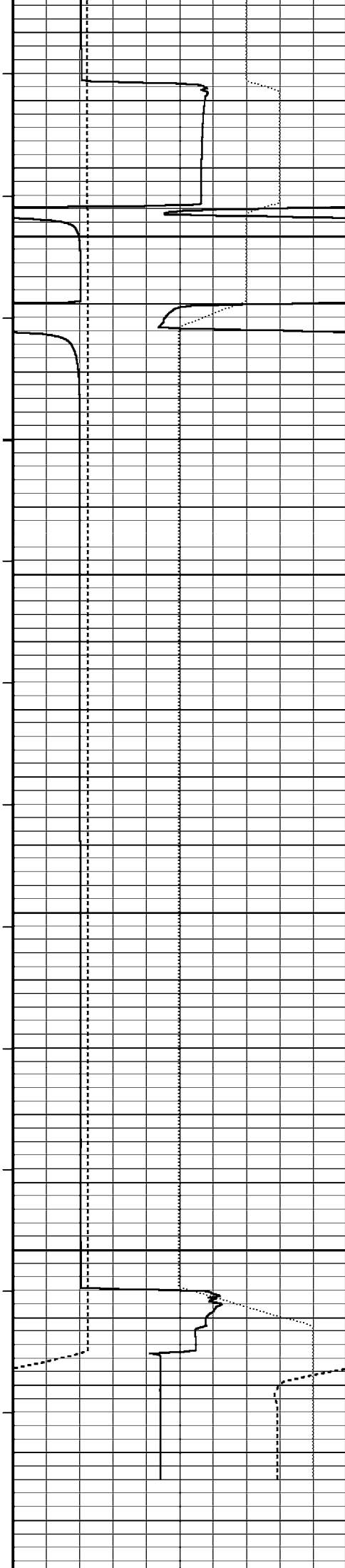
Quartzdyne 1's

Replay Scale 1:400

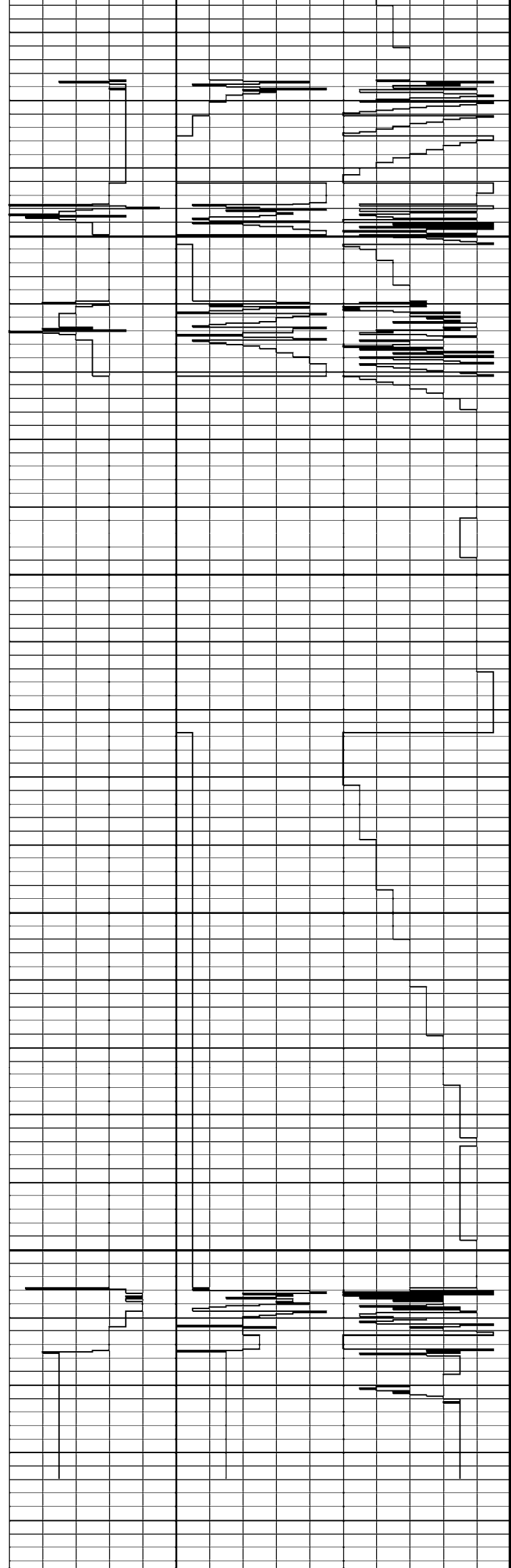


4336.25	
4336.27	
4336.24	
4607.69	
4617.79	
8.69	2260.74
26.03	3559.35
42.68	3602.09
60.05	3612.54
76.75	3609.76
93.39	3609.43
110.75	3610.13
127.40	3611.06
144.77	3612.32
161.45	3613.81
178.09	3615.27
195.44	3616.51
212.13	3617.77
229.48	3618.97
246.13	3620.14
262.83	3621.04
280.17	3621.96
296.85	3622.47





314.19	3623.31
330.83	3624.09
7.32	4733.94
24.67	4716.29
41.33	4704.49
58.69	4699.22
15.35	3543.78
31.98	3612.93
2.66	3614.45
19.33	1596.46
36.65	3589.52
53.35	3606.66
69.99	3608.70
87.35	3608.45
104.04	3608.09
121.39	3607.97
138.04	3608.02
154.72	3608.20
172.05	3608.56
188.72	3608.99
206.09	3609.54
222.74	3610.13
239.44	3610.77
256.75	3611.45
273.45	3612.08
290.79	3612.78
307.44	3613.46
324.13	3614.13
341.47	3614.87
358.18	3615.57
375.49	3616.29
392.20	3616.95
408.85	3617.59
426.21	3617.67
442.89	3617.22
460.22	3617.72
476.88	3618.22
6.68	4124.14
24.05	4742.40
40.71	4337.43
58.05	4333.98
74.74	4337.16
	4337.20





← Timing Marks  
every 60.0 sec

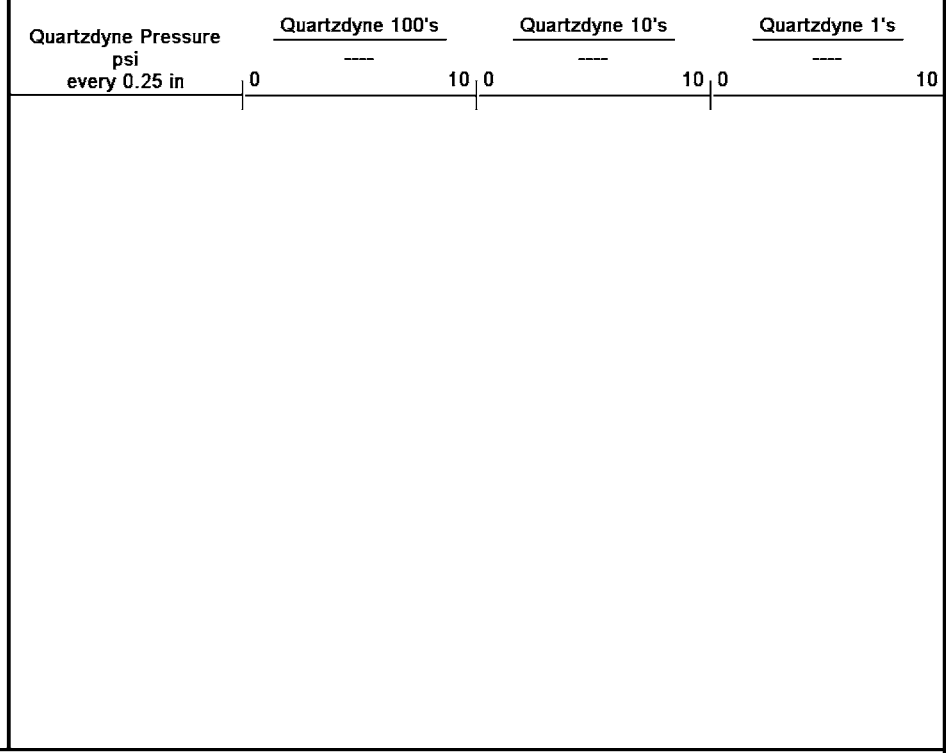
MFC Caliper  
inches  
6 11 16

Quartzdyne Pressure  
psi  
0 1500 3000  
3000 4500 6000

Piston Swept Volume  
cc  
45 20 -5

TPRE  
every  
0.25 in

Replay  
Scale  
1:400

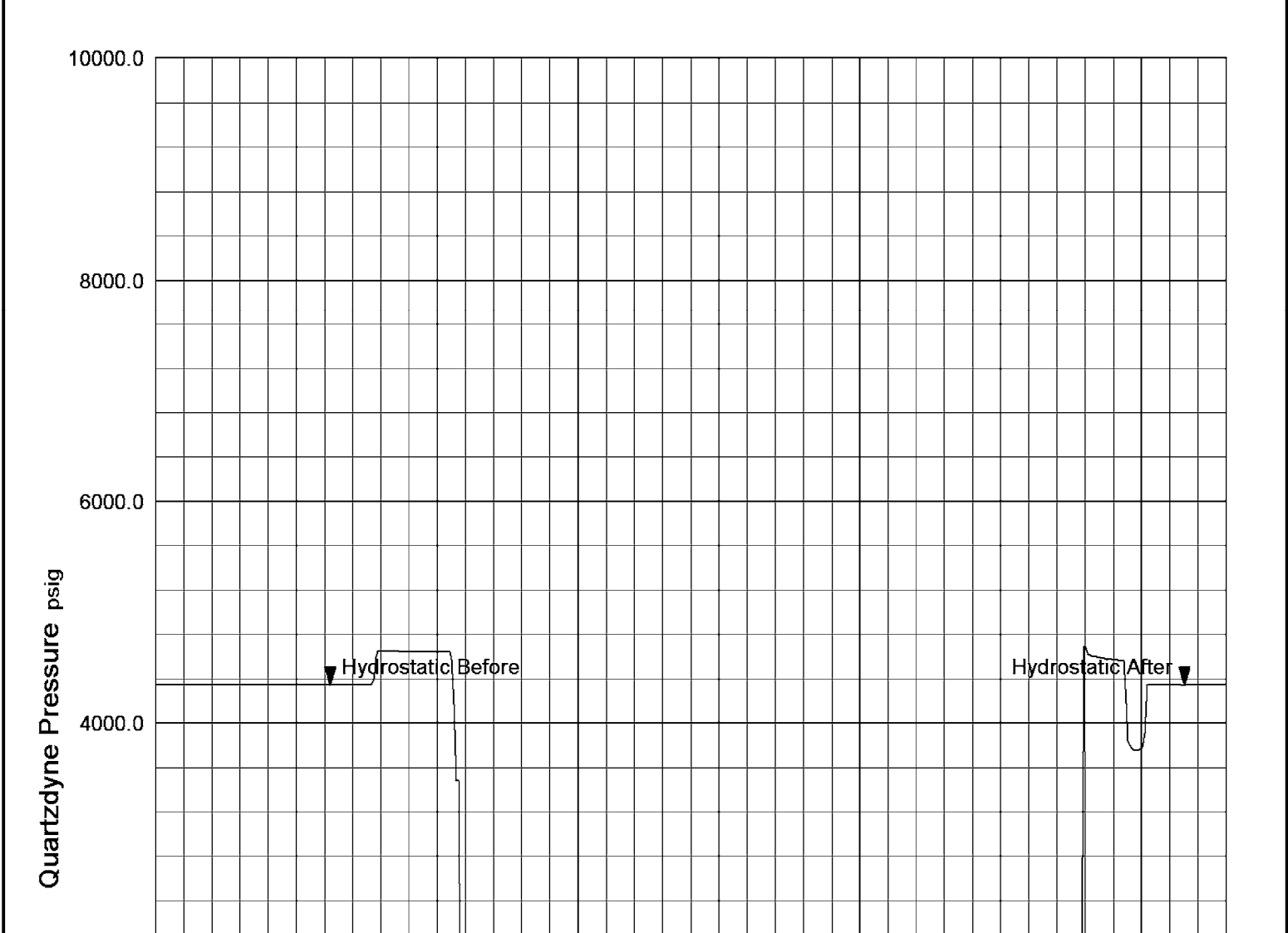


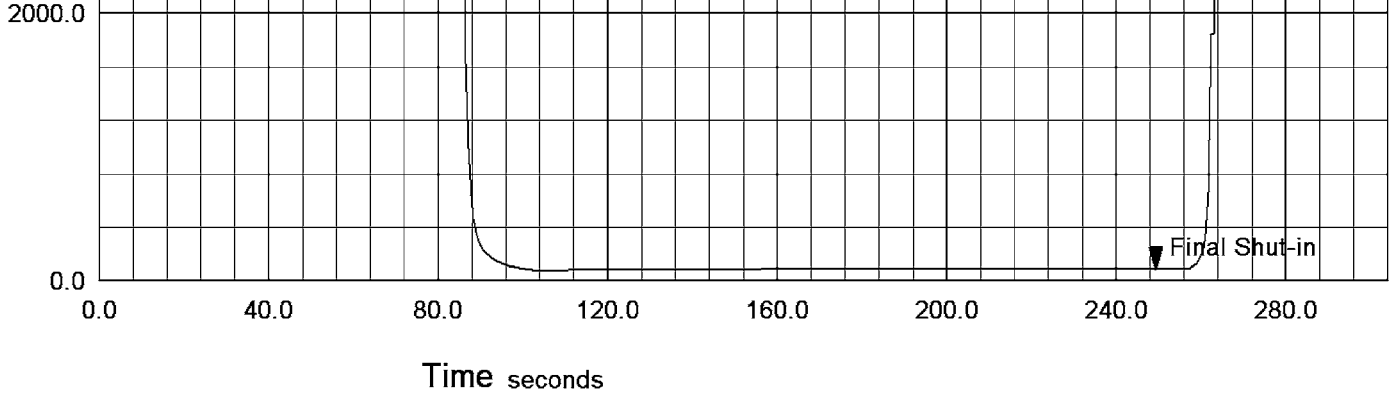
Time Based Data - Notional Logging Speed 9.00 metres/min Plotted on 06-OCT-2005 13:46  
 Filename: C:\Data\Childers Cove\MCG098MFT017\_19.dta Recorded on 05-OCT-2005 03:56  
 System Configuration Dates: Logged 17-JUN-2004: Plotted 23-AUG-2004:

↑ Pretest 6 at 2585.55 m ↑

### Pressure - Time Plot

File: C:\Data\Childers Cove\MCG098MFT017\_20.dta File Date: 04-OCT-2005 21:04:04  
 Run Id: Pretest 7 at 2589.92 m  
 Test Number: 7





↓ **Pretest 7 at 2589.92 m** ↓

Time Based Data - Notional Logging Speed 10.00 metres/min Plotted on 06-OCT-2005 13:46  
 Filename: C:\Data\Childers Cove\MCG098MFT017\_20.dta Recorded on 05-OCT-2005 04:22  
 System Configuration Dates: Logged 17-JUN-2004: Plotted 23-AUG-2004:

← Timing Marks every 60.0 sec

MFC Caliper inches  
6 11 16

Quartzdyne Pressure psi  
0 1500 3000  
3000 4500 6000

Piston Swept Volume cc  
45 20 -5

TPRE every 0.25 in

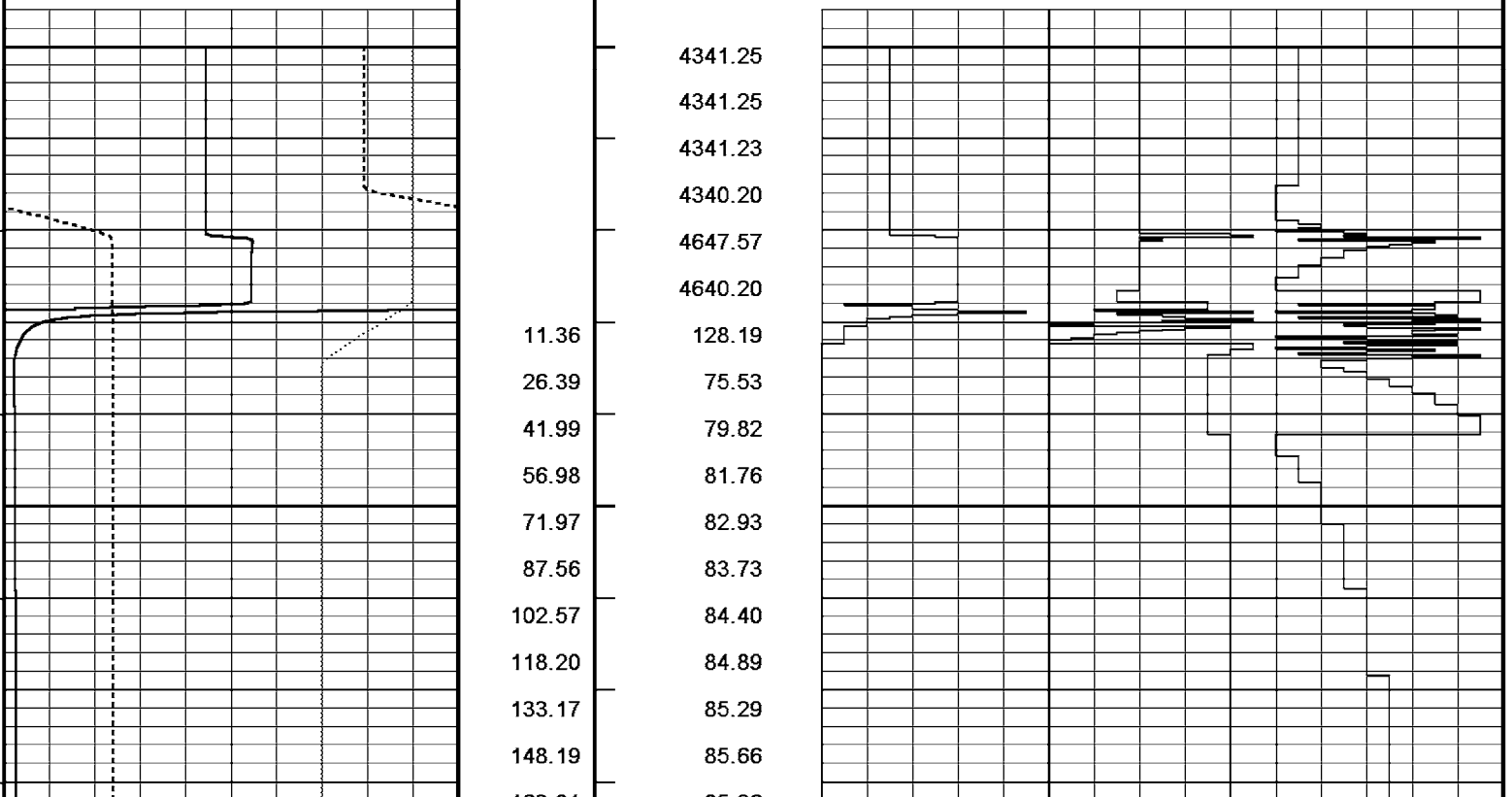
Quartzdyne Pressure psi every 0.25 in

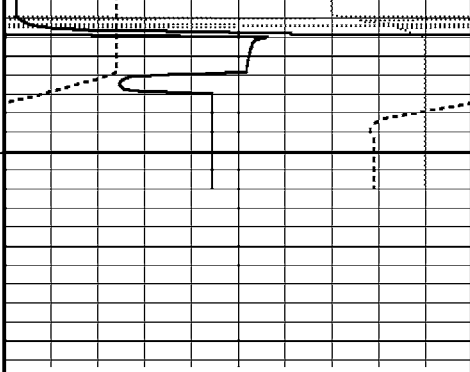
Quartzdyne 100's 0 10.0

Quartzdyne 10's 10.0

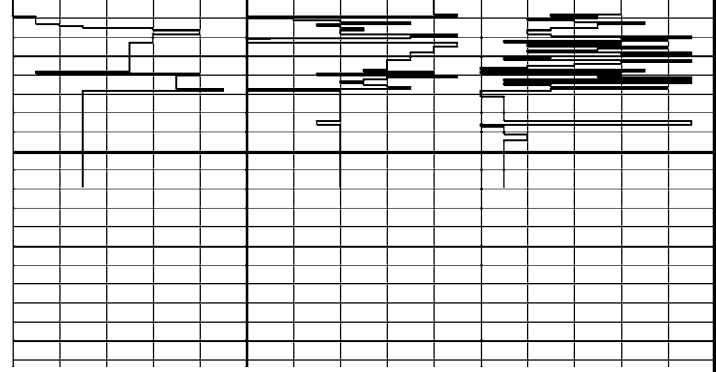
Quartzdyne 1's 10

Replay Scale 1:400





163.81	85.96
10.84	1842.70
26.44	3751.54
41.44	4341.35
56.41	4341.31



← Timing Marks  
every 60.0 sec

MFC Caliper  
inches  
6 11 16

Quartzdyne Pressure  
psi  
0 1500 3000  
3000 4500 6000

Piston Swept Volume  
cc  
45 20 -5

TPRE  
every  
0.25 in

Replay  
Scale  
1:400

Quartzdyne Pressure  
psi  
every 0.25 in

Quartzdyne 100's  
0 10 0

Quartzdyne 10's  
0 10 0

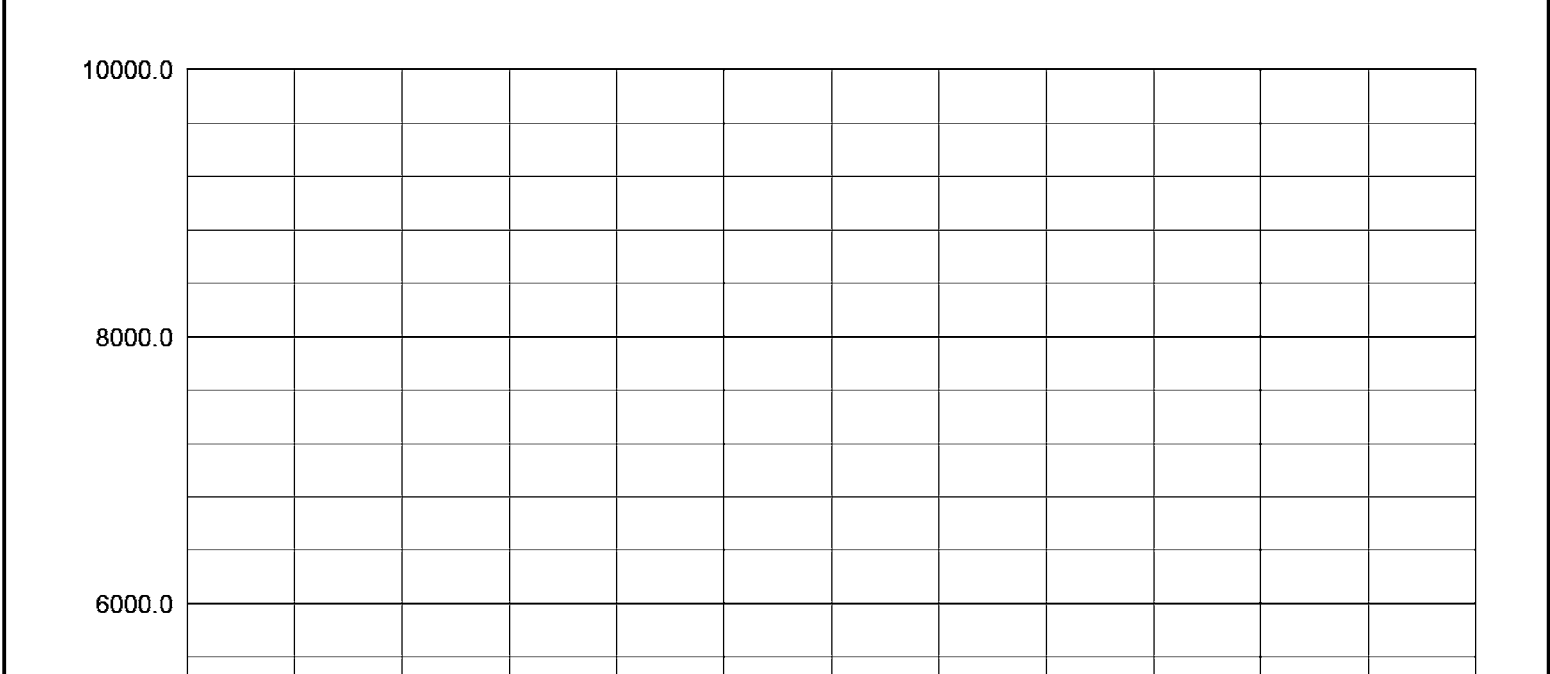
Quartzdyne 1's  
0 10

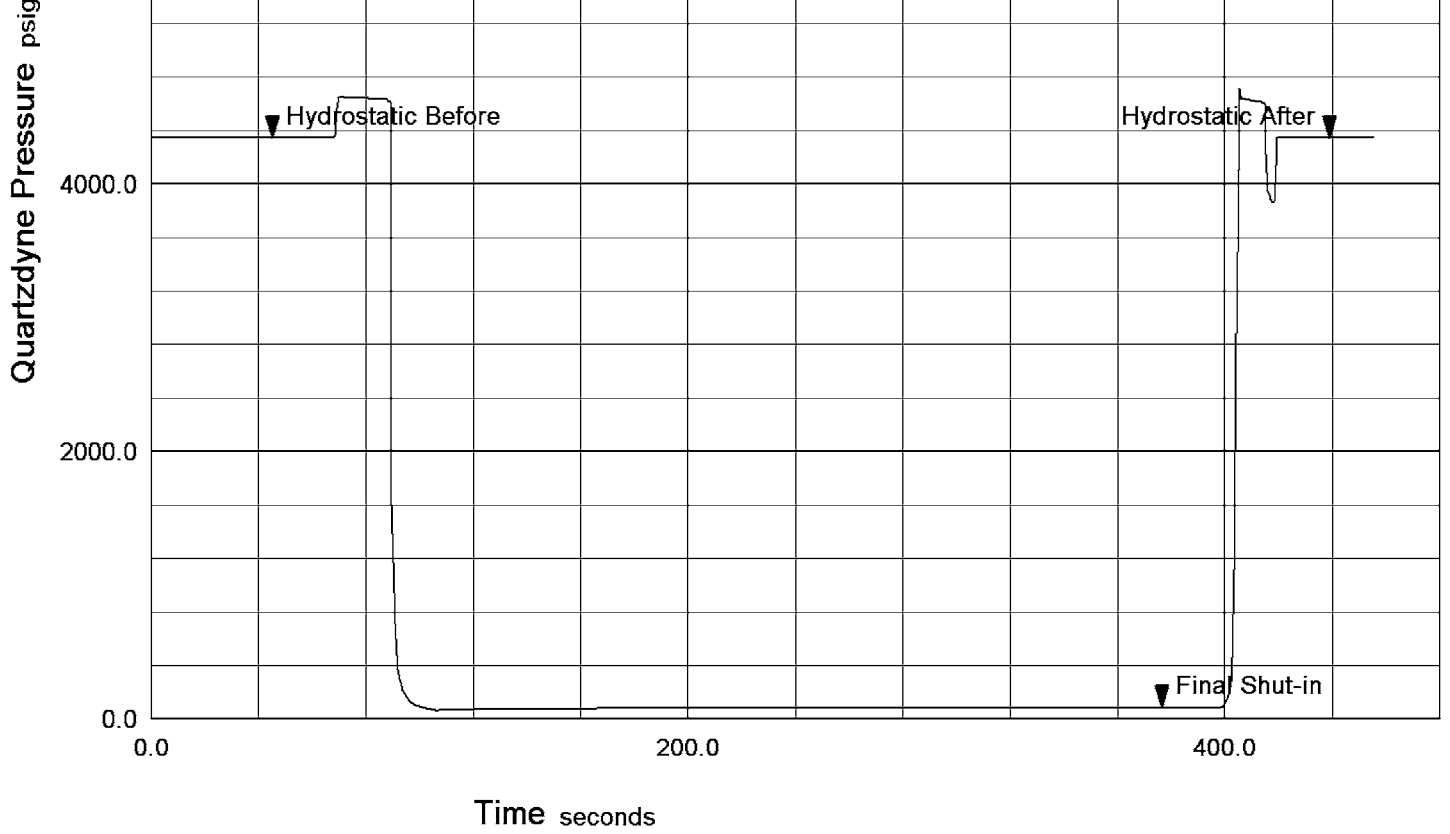
Time Based Data - Notional Logging Speed 10.00 metres/min  
 Plotted on 06-OCT-2005 13:46  
 Filename: C:\Data\Childers Cove\MCG098MFT017\_20.dta  
 Recorded on 05-OCT-2005 04:22  
 System Configuration Dates: Logged 17-JUN-2004: Plotted 23-AUG-2004:

↑ Pretest 7 at 2589.92 m ↑

### Pressure - Time Plot

File: C:\Data\Childers Cove\MCG098MFT017\_21.dta  
 Run Id: Pretest 8 at 2593.43 m  
 Test Number: 8  
 File Date: 04-OCT-2005 21:04:12





Pretest 8 at 2593.43 m

Time Based Data - Notional Logging Speed 10.00 metres/min Plotted on 06-OCT-2005 13:46  
 Filename: C:\Data\Childers Cove\MCG098MFT017\_21.dta Recorded on 05-OCT-2005 04:31  
 System Configuration Dates: Logged 17-JUN-2004: Plotted 23-AUG-2004:

Timing Marks every 60.0 sec

MFC Caliper inches  
6      11      16

Quartzdyne Pressure psi  
0      1500      3000  
3000      4500      6000

Piston Swept Volume cc  
45      20      -5

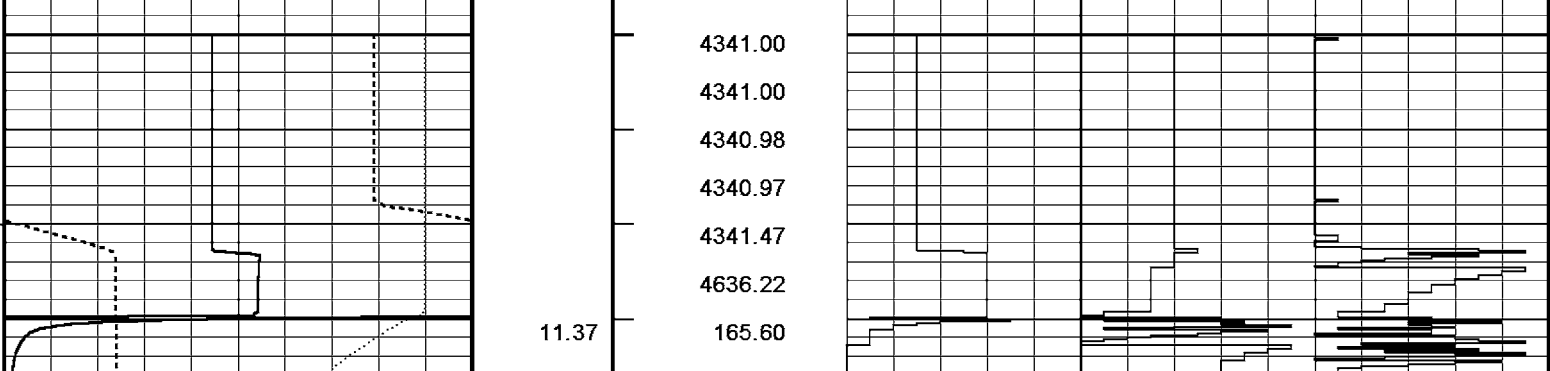
TPRE every 0.25 in

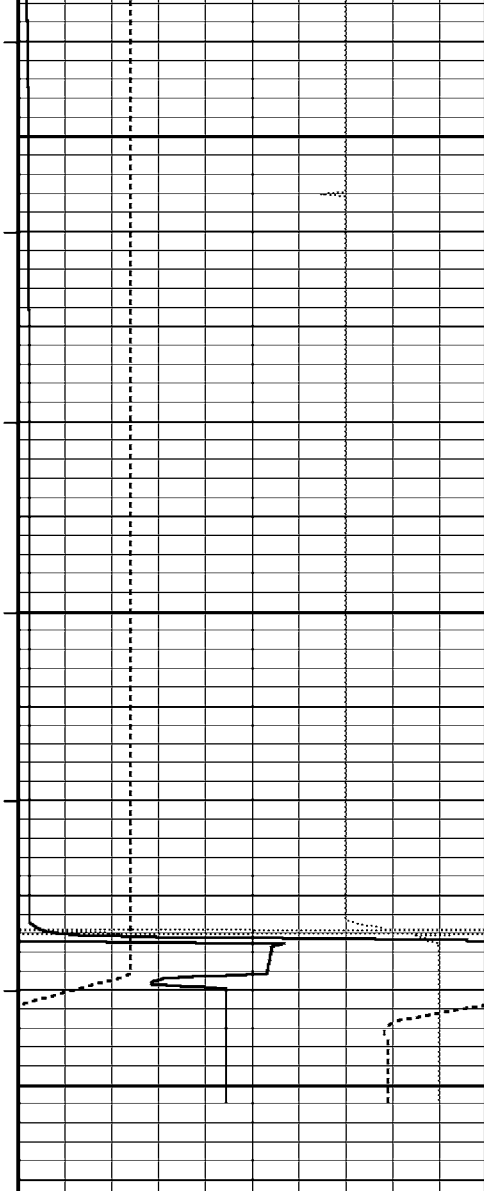
Quartzdyne Pressure psi every 0.25 in

Quartzdyne 100's      Quartzdyne 10's      Quartzdyne 1's

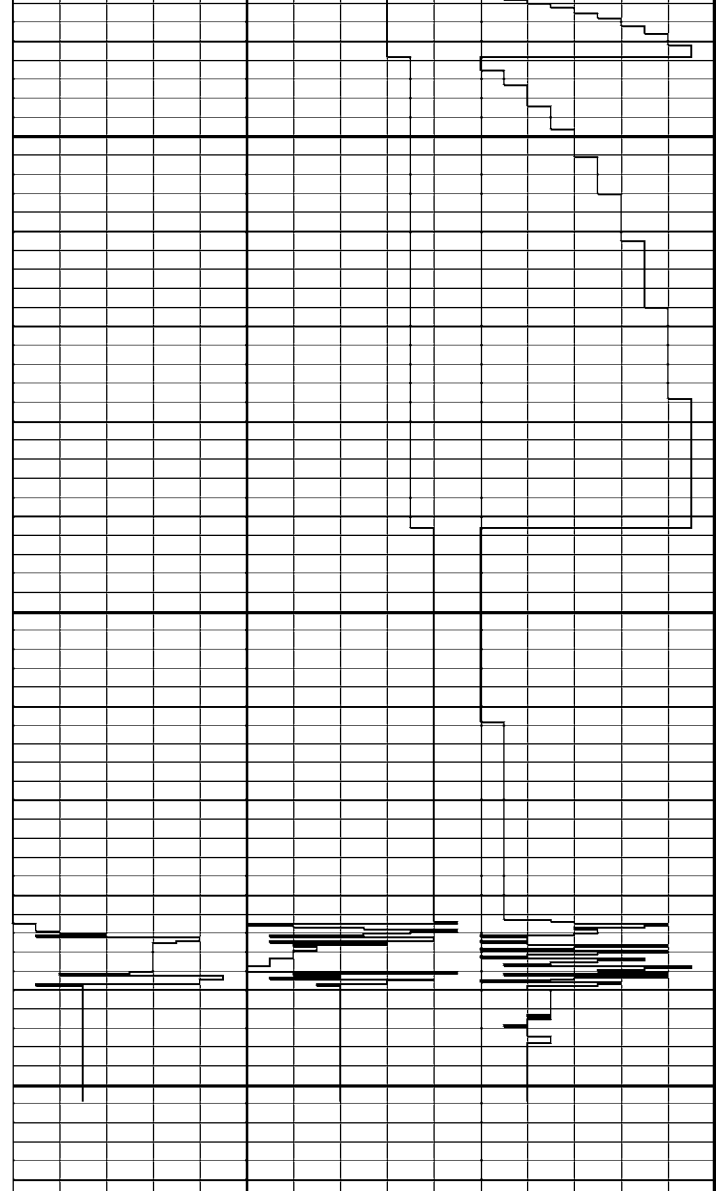
0      10.0      10.0      10

Replay Scale 1:400





26.36	64.21
41.98	70.14
56.99	72.99
71.95	74.83
87.58	76.19
102.57	77.16
118.18	77.89
133.17	78.47
148.18	78.96
163.78	79.43
178.75	79.77
194.35	80.08
209.39	80.34
224.36	80.60
239.98	80.84
254.99	81.04
270.56	81.27
285.55	81.46
300.57	81.64
4.18	108.51
19.21	4598.80
34.78	4342.78
49.79	4342.65



Timing Marks  
every 60.0 sec

MFC Caliper  
inches  
6 11 16

Quartzdyne Pressure  
psi  
0 1500 3000  
3000 4500 6000

Piston Swept Volume  
cc  
45 20 -5

TPRE  
every  
0.25 in

Replay  
Scale  
1:400

Quartzdyne Pressure  
psi  
every 0.25 in

Quartzdyne 100's  
0 10, 0

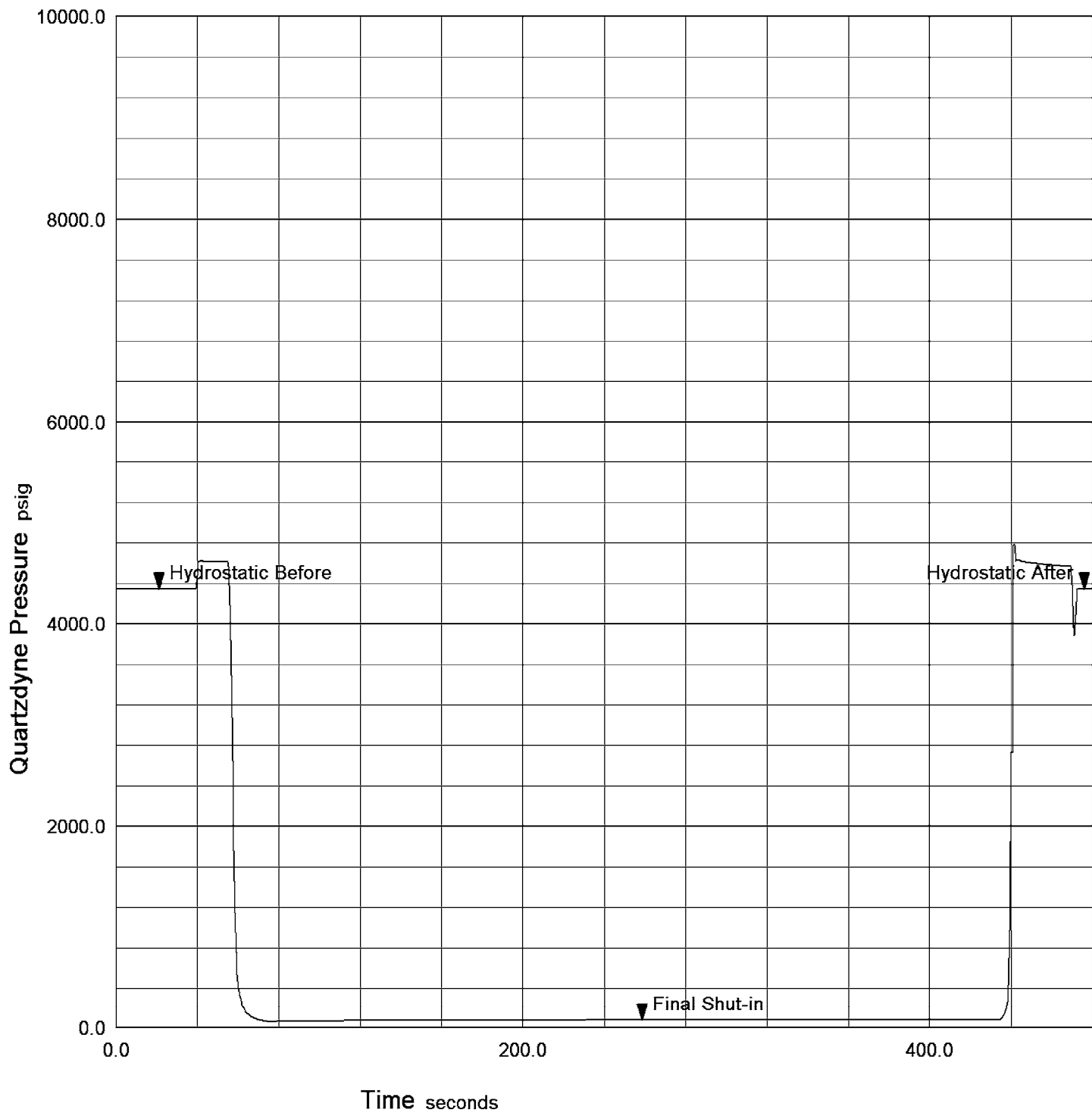
Quartzdyne 10's  
0 10, 0

Quartzdyne 1's  
0 10

Time Based Data - Notional Logging Speed 10.00 metres/min  
 Plotted on 06-OCT-2005 13:46  
 Filename: C:\Data\Childers Cove\MCG098MFT017\_21.dta  
 Recorded on 05-OCT-2005 04:31  
 System Configuration Dates: Logged 17-JUN-2004: Plotted 23-AUG-2004:

↑ Pretest 8 at 2593.43 m ↑

Pressure - Time Plot



Pretest 9 at 2596.65 m

Time Based Data - Notional Logging Speed 10.00 metres/min Plotted on 06-OCT-2005 13:46  
 Filename: C:\Data\Childers Cove\MCG098MFT017\_22.dta Recorded on 05-OCT-2005 04:42  
 System Configuration Dates: Logged 17-JUN-2004: Plotted 23-AUG-2004:

<p>Timing Marks every 60.0 sec</p> <hr/> <p>MFC Caliper inches</p> <p>6                      11                      16</p>	<p>TPRE every 0.25 in</p>	<table style="width: 100%; border-collapse: collapse;"> <thead> <tr> <th style="text-align: left;">Quartzdyne Pressure psi every 0.25 in</th> <th style="text-align: center;">Quartzdyne 100's</th> <th style="text-align: center;">Quartzdyne 10's</th> <th style="text-align: center;">Quartzdyne 1's</th> </tr> </thead> <tbody> <tr> <td style="text-align: right;">0</td> <td style="text-align: center;">---</td> <td style="text-align: center;">---</td> <td style="text-align: center;">---</td> </tr> <tr> <td style="text-align: right;">10,0</td> <td style="text-align: center;">---</td> <td style="text-align: center;">---</td> <td style="text-align: center;">---</td> </tr> <tr> <td style="text-align: right;">10,0</td> <td style="text-align: center;">---</td> <td style="text-align: center;">---</td> <td style="text-align: center;">---</td> </tr> </tbody> </table>	Quartzdyne Pressure psi every 0.25 in	Quartzdyne 100's	Quartzdyne 10's	Quartzdyne 1's	0	---	---	---	10,0	---	---	---	10,0	---	---	---
Quartzdyne Pressure psi every 0.25 in	Quartzdyne 100's	Quartzdyne 10's	Quartzdyne 1's															
0	---	---	---															
10,0	---	---	---															
10,0	---	---	---															

Quartzdyne Pressure

psi

0 1500 3000

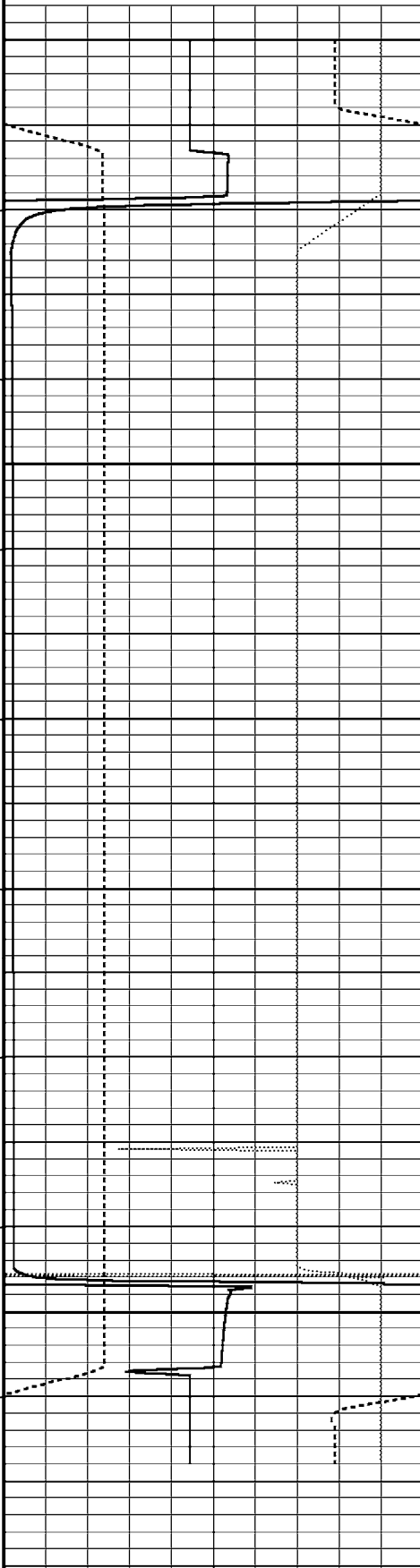
3000 4500 6000

Piston Swept Volume

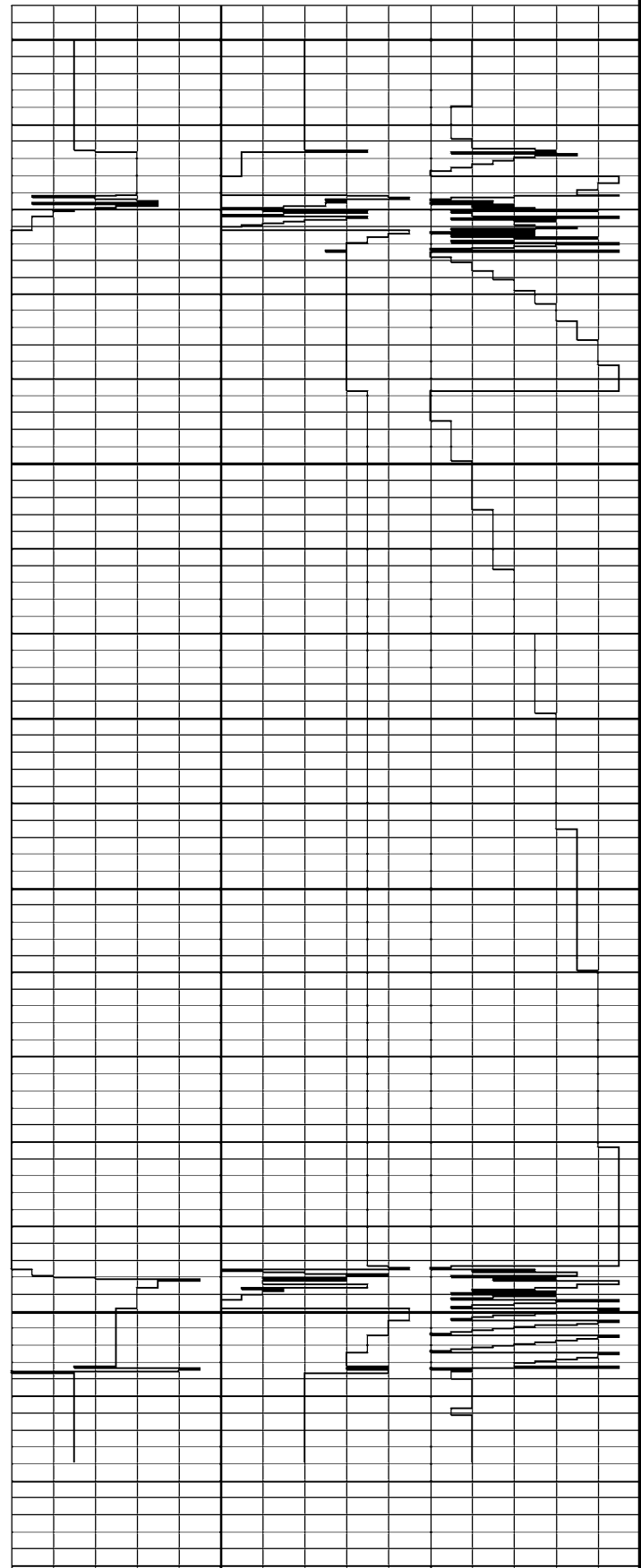
cc

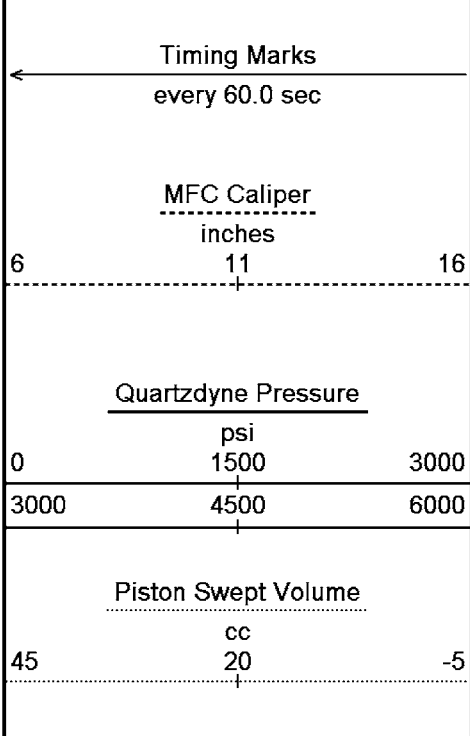
45 20 -5

Replay  
Scale  
1:400



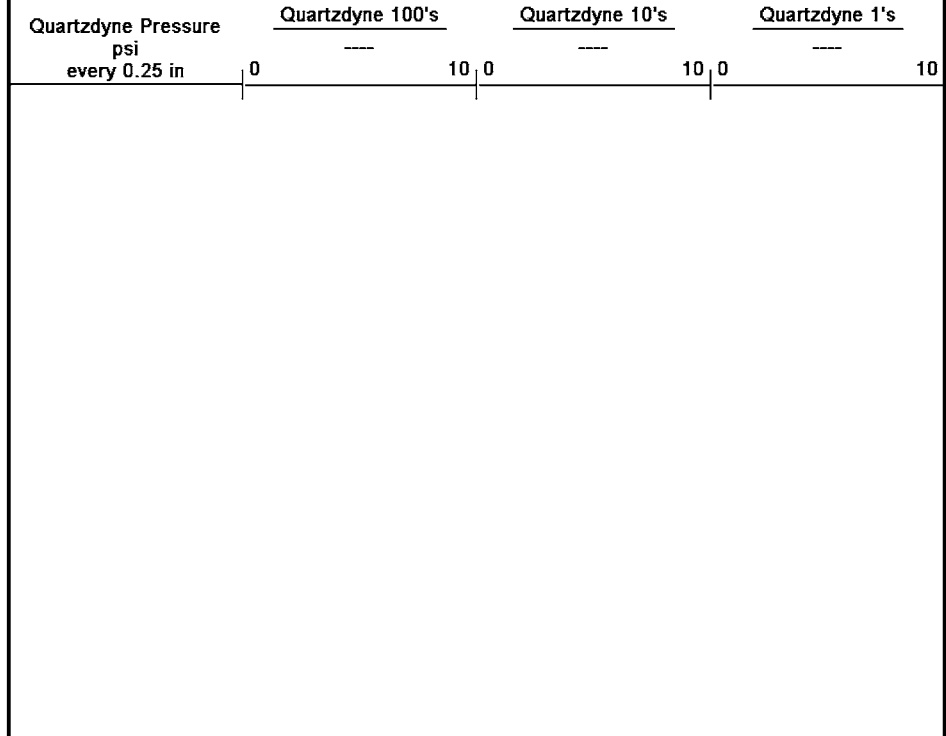
4342.24	
4342.20	
4341.73	
4609.60	
10.81	146.87
25.83	62.60
41.39	66.20
56.38	68.37
71.99	70.11
87.02	71.39
102.00	72.39
117.61	73.22
132.59	73.94
148.21	74.65
163.21	75.29
178.20	75.80
193.78	76.23
208.83	76.61
224.39	76.98
239.39	77.30
254.38	77.60
269.99	77.88
284.99	78.15
300.59	78.42
315.59	78.66
330.60	78.88
346.18	79.11
361.19	79.33
376.78	79.54
13.78	4613.75
28.78	4577.32
44.41	4342.33
59.38	4342.32





TPRE  
every  
0.25 in

Replay  
Scale  
1:400

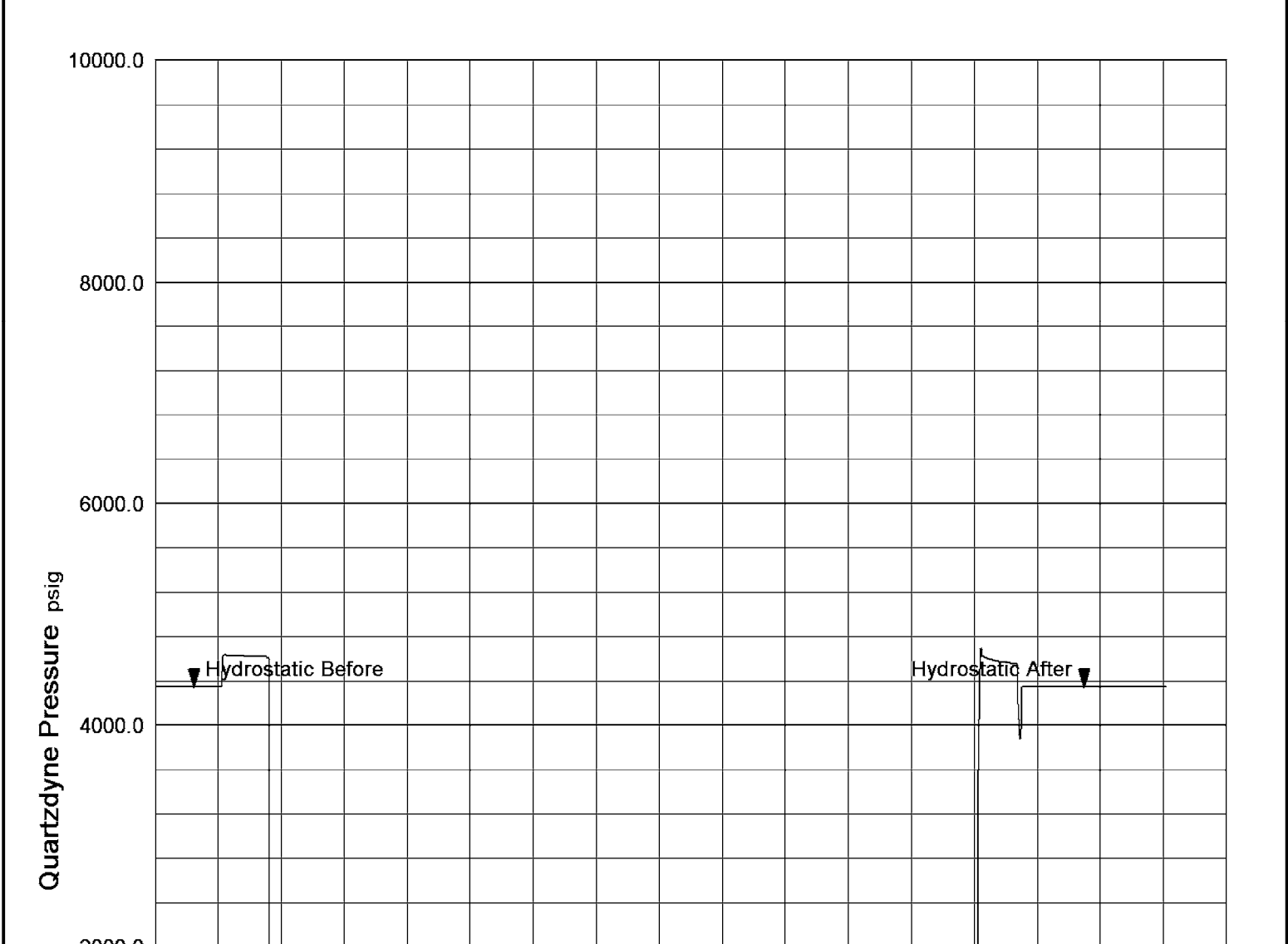


Time Based Data - Notional Logging Speed 10.00 metres/min  
 Plotted on 06-OCT-2005 13:46  
 Filename: C:\Data\Childers Cove\MCG098MFT017\_22.dta  
 Recorded on 05-OCT-2005 04:42  
 System Configuration Dates: Logged 17-JUN-2004: Plotted 23-AUG-2004:

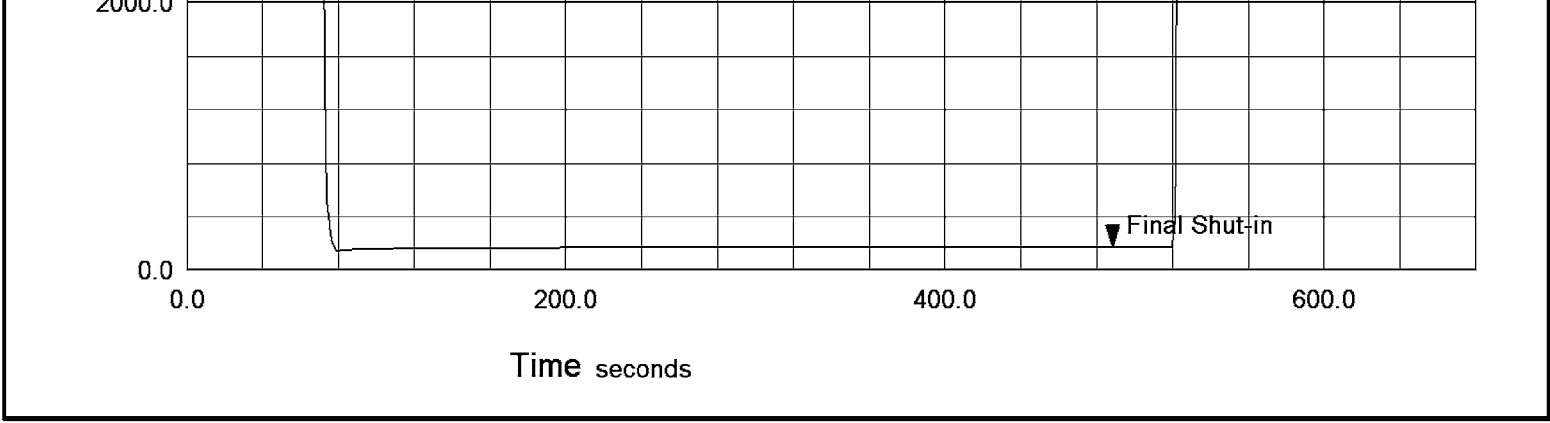
↑ Pretest 9 at 2596.65 m ↑

### Pressure - Time Plot

File: C:\Data\Childers Cove\MCG098MFT017\_23.dta  
 Run Id: Pretest 10 at 2594.22 m  
 Test Number: 10  
 File Date: 04-OCT-2005 21:04:30







↓ **Pretest 10 at 2594.22 m** ↓

Time Based Data - Notional Logging Speed 10.00 metres/min Plotted on 06-OCT-2005 13:46  
 Filename: C:\Data\Childers Cove\MCG098MFT017\_23.dta Recorded on 05-OCT-2005 04:54  
 System Configuration Dates: Logged 17-JUN-2004: Plotted 23-AUG-2004:

← Timing Marks every 60.0 sec

MFC Caliper inches  
6      11      16

---

Quartzdyne Pressure psi  
0      1500      3000  
3000      4500      6000

---

Piston Swept Volume cc  
45      20      -5

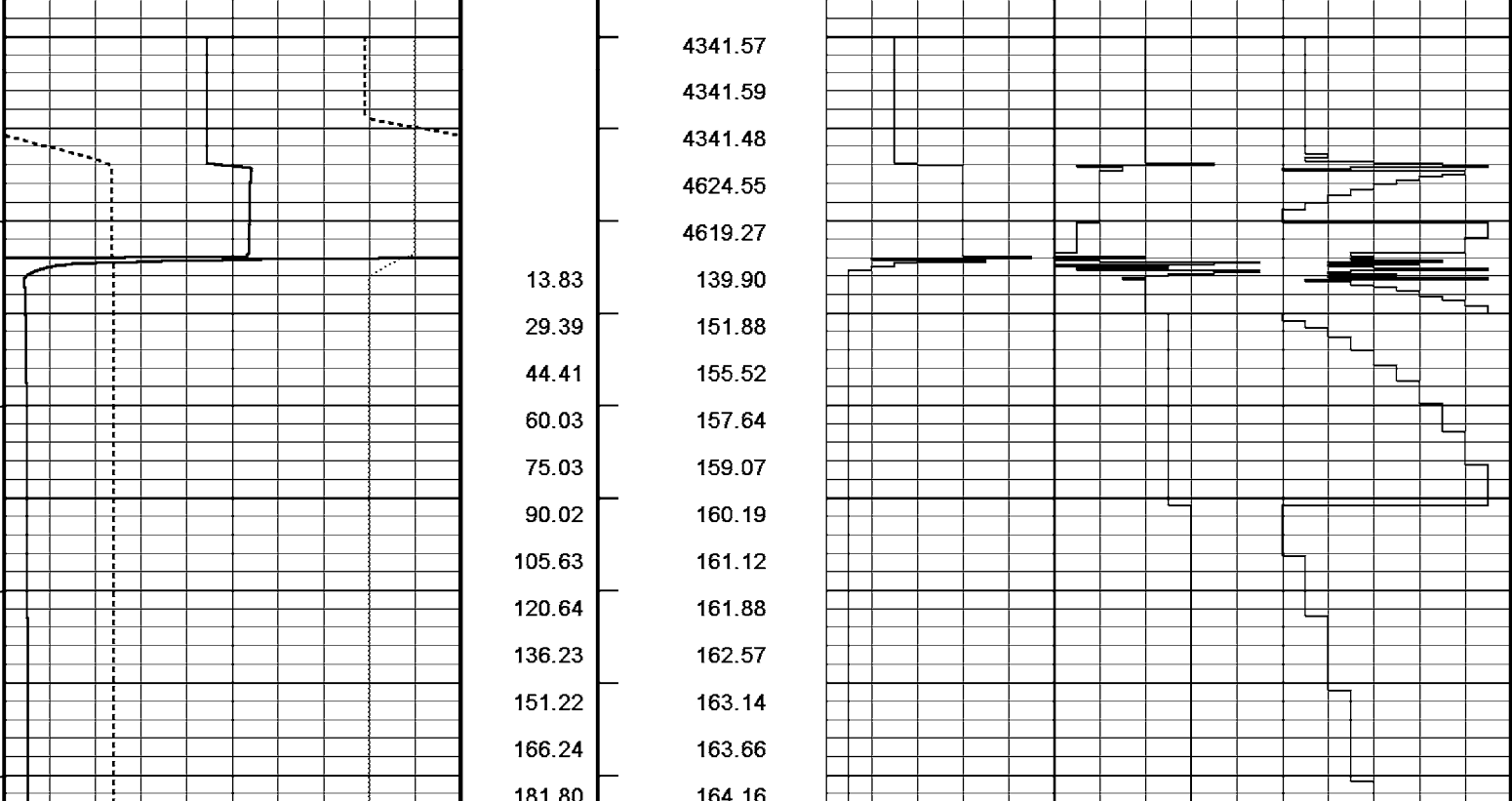
TPRE every 0.25 in

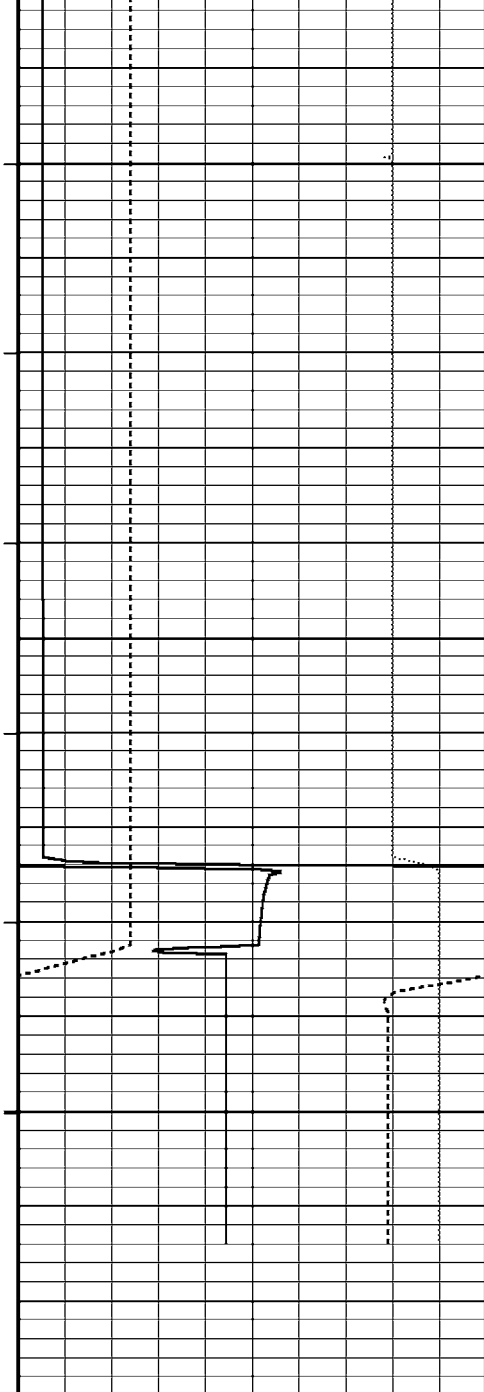
Quartzdyne Pressure psi every 0.25 in

Quartzdyne 100's      Quartzdyne 10's      Quartzdyne 1's  
 ---      ---      ---

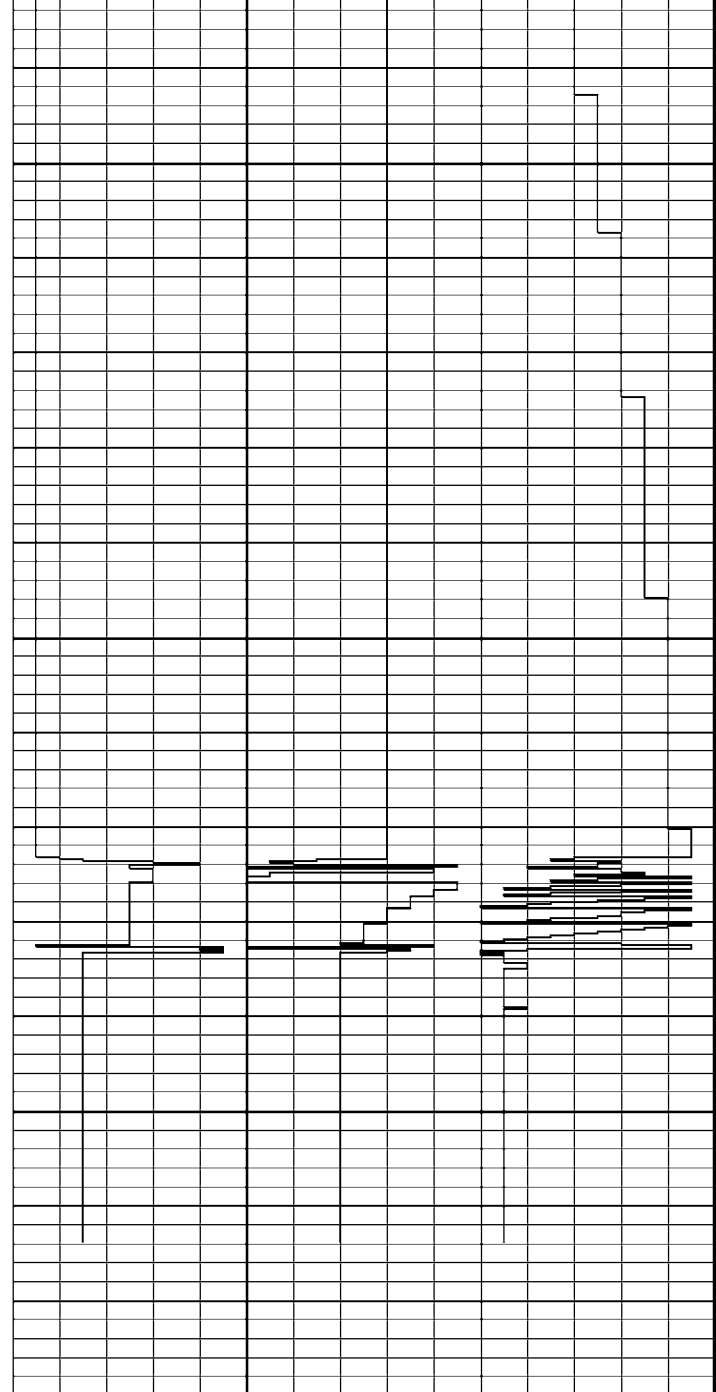
0      10      0      10      0      10

Replay Scale 1:400





196.81	164.58
212.44	164.99
227.40	165.34
242.39	165.69
258.01	166.03
272.99	166.33
288.62	166.63
303.64	166.90
318.60	167.17
334.23	167.43
349.23	167.66
364.83	167.90
379.81	168.12
394.80	168.33
410.41	168.54
425.43	168.74
440.99	168.94
5.97	616.97
20.99	4569.31
36.58	4341.68
51.56	4341.94
67.20	4341.63
82.16	4341.54
97.19	4341.49
112.76	4341.45



Timing Marks  
every 60.0 sec

MFC Caliper  
inches  
6 11 16

Quartzdyne Pressure  
psi  
0 1500 3000  
3000 4500 6000

Piston Swept Volume  
cc  
45 20 -5

TPRE  
every  
0.25 in

Replay  
Scale  
1:400

Quartzdyne Pressure  
psi  
every 0.25 in

Quartzdyne 100's  
0 10 0

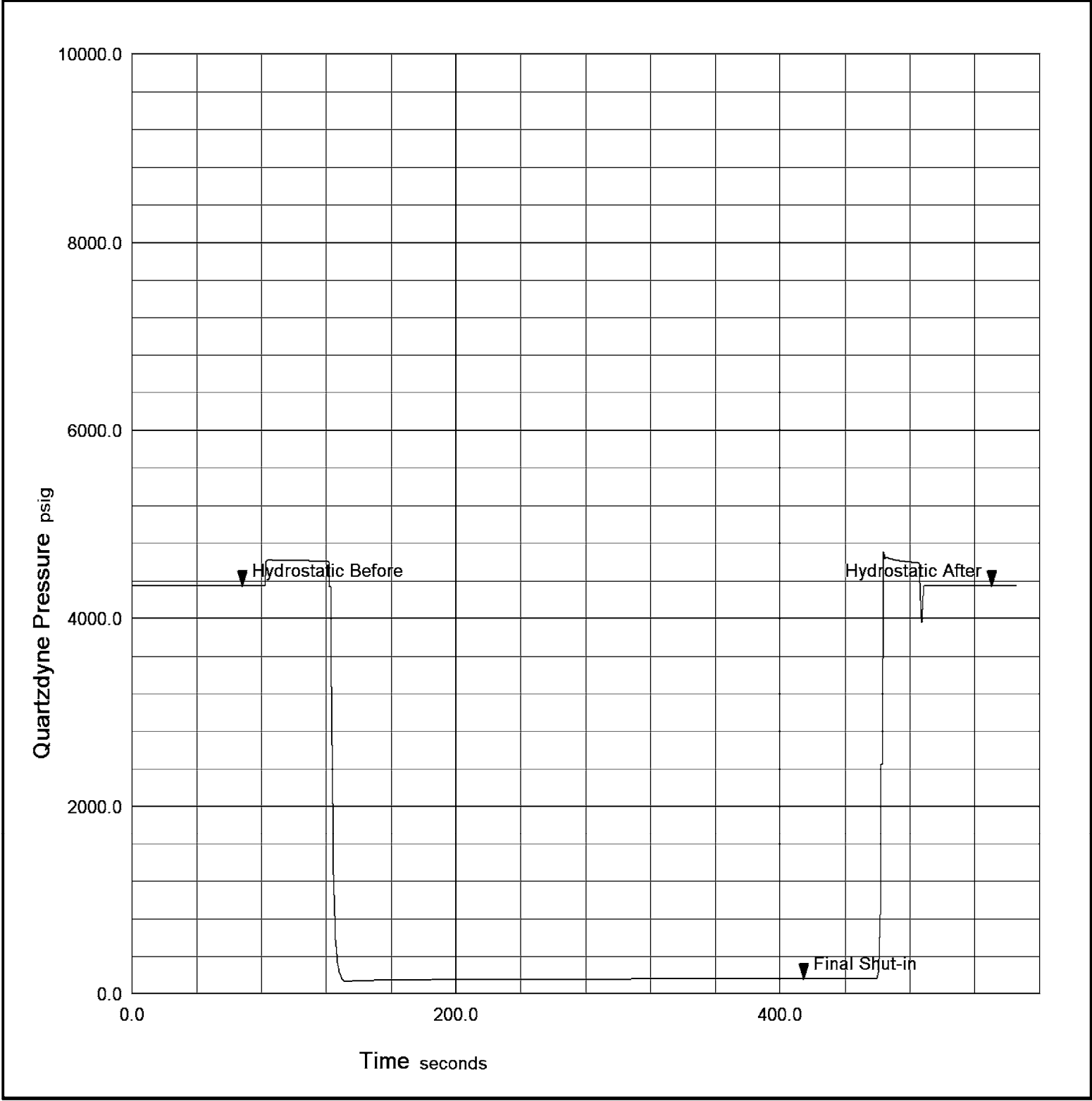
Quartzdyne 10's  
0 10 0

Quartzdyne 1's  
0 10

### Pressure - Time Plot

File: C:\Data\Childers Cove\MCG098MFT017\_24.dta  
 Run Id: Pretest 11 at 2590.51 m  
 Test Number: 11

File Date: 04-OCT-2005 21:04:58



Time Based Data - Notional Logging Speed 10.00 metres/min

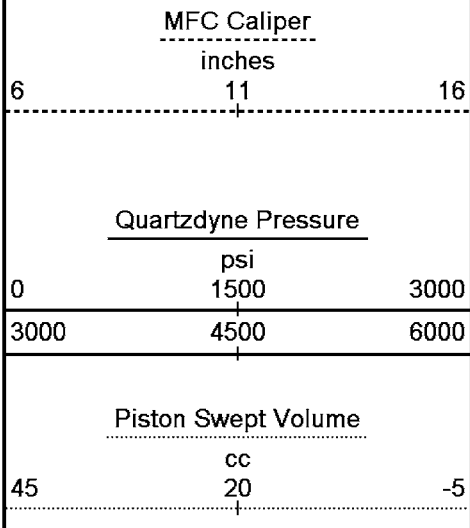
Plotted on 06-OCT-2005 13:47

Filename: C:\Data\Childers Cove\MCG098MFT017\_24.dta

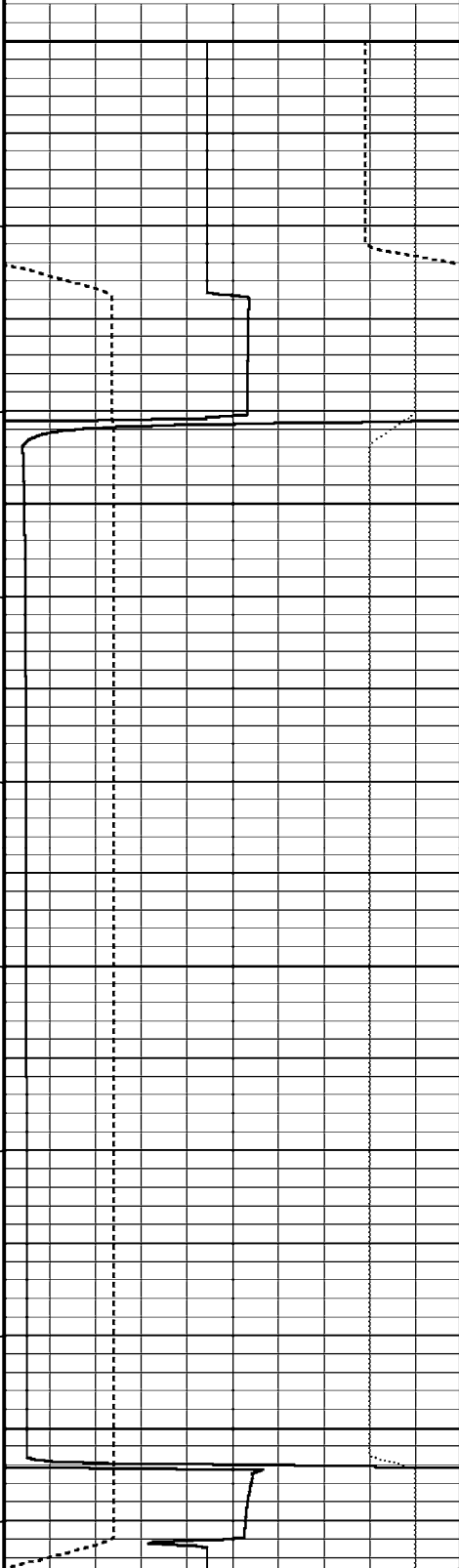
Recorded on 05-OCT-2005 05:07

System Configuration Dates: Logged 17-JUN-2004: Plotted 23-AUG-2004:

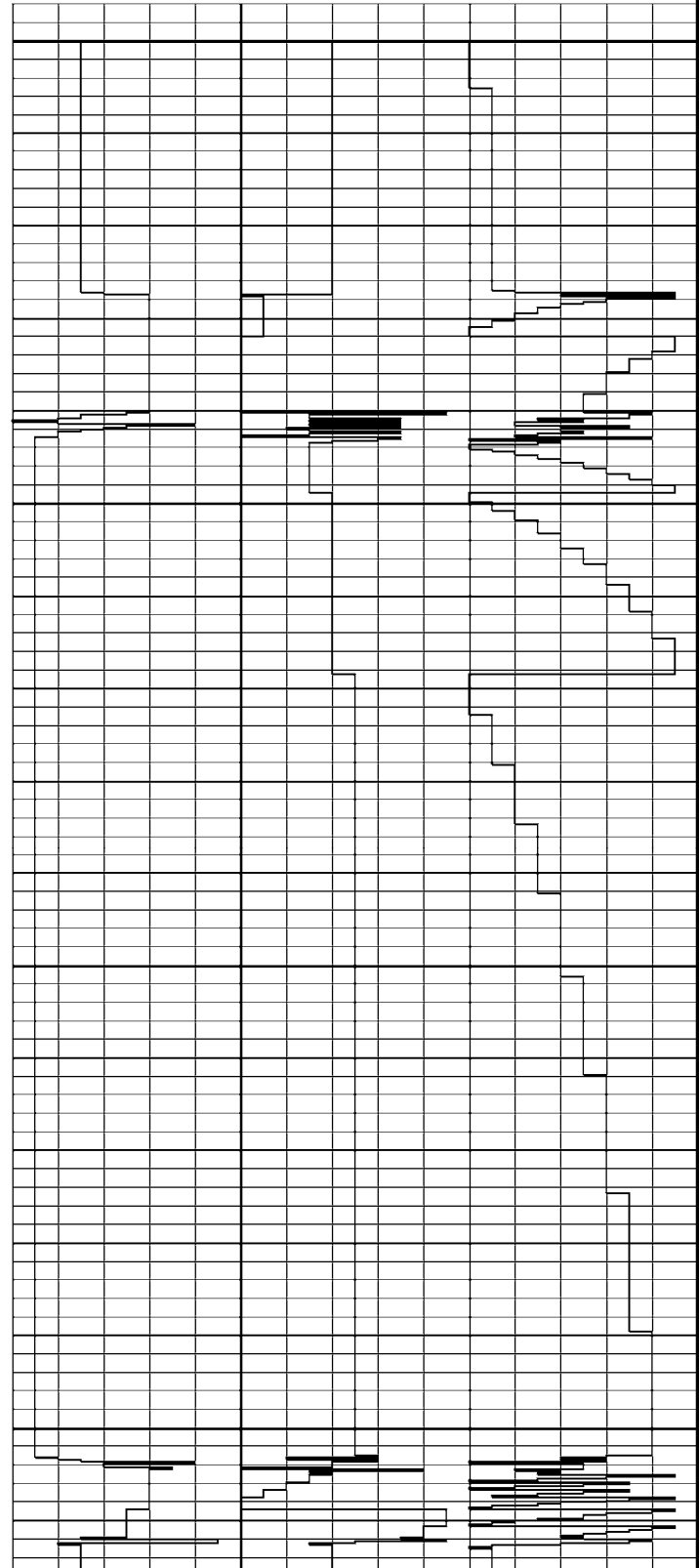
← Timing Marks every 60.0 sec	TPRE every 0.25 in	Quartzdyne Pressure psi every 0.25 in	Quartzdyne 100's ---	Quartzdyne 10's ---	Quartzdyne 1's ---
		0	10,0	10,0	10



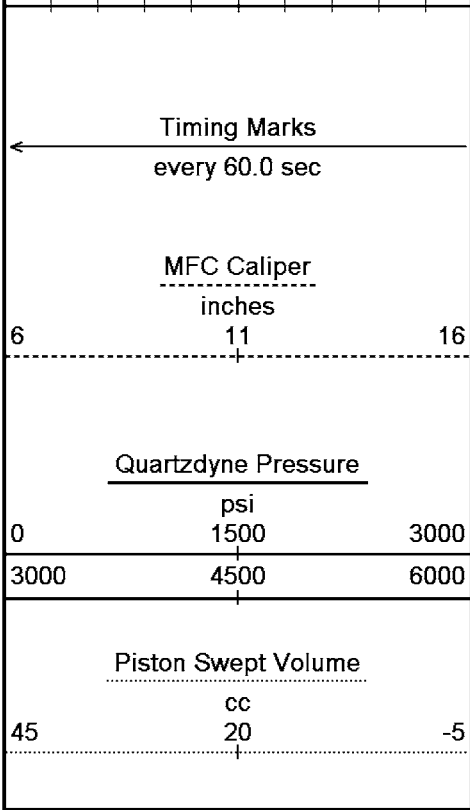
Replay  
Scale  
1:400



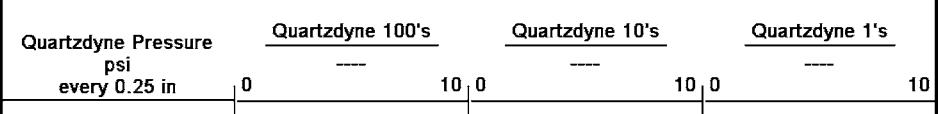
- 4340.84
- 4341.03
- 4341.13
- 4341.18
- 4341.22
- 4341.50
- 4610.68
- 4606.71
- 6.00
- 20.99
- 36.03
- 51.63
- 66.59
- 82.22
- 97.19
- 112.21
- 127.82
- 142.79
- 158.43
- 173.42
- 188.43
- 204.01
- 219.01
- 234.62
- 249.62
- 264.61
- 280.20
- 295.22
- 310.81
- 325.82
- 4.79
- 20.41
- 35.40
- 577.35
- 136.98
- 142.87
- 146.13
- 148.14
- 149.69
- 150.85
- 151.81
- 152.66
- 153.38
- 154.04
- 154.61
- 155.14
- 155.64
- 156.07
- 156.49
- 156.88
- 157.23
- 157.59
- 157.91
- 158.23
- 158.53
- 224.92
- 4601.77
- 4341.70



50.99 4341.59  
 66.01 4341.23  
 81.02 4341.14



TPRE  
every  
0.25 in



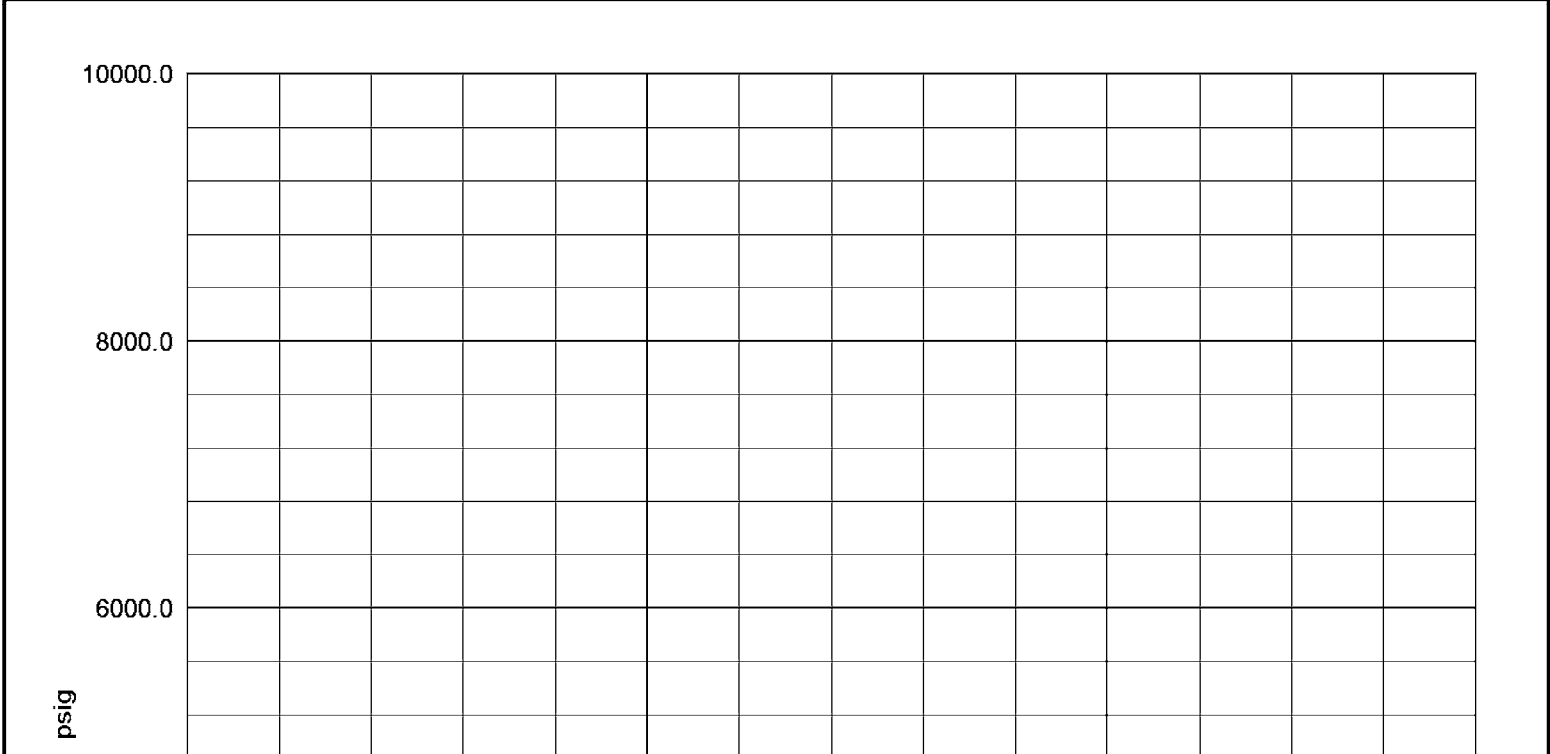
Replay  
Scale  
1:400

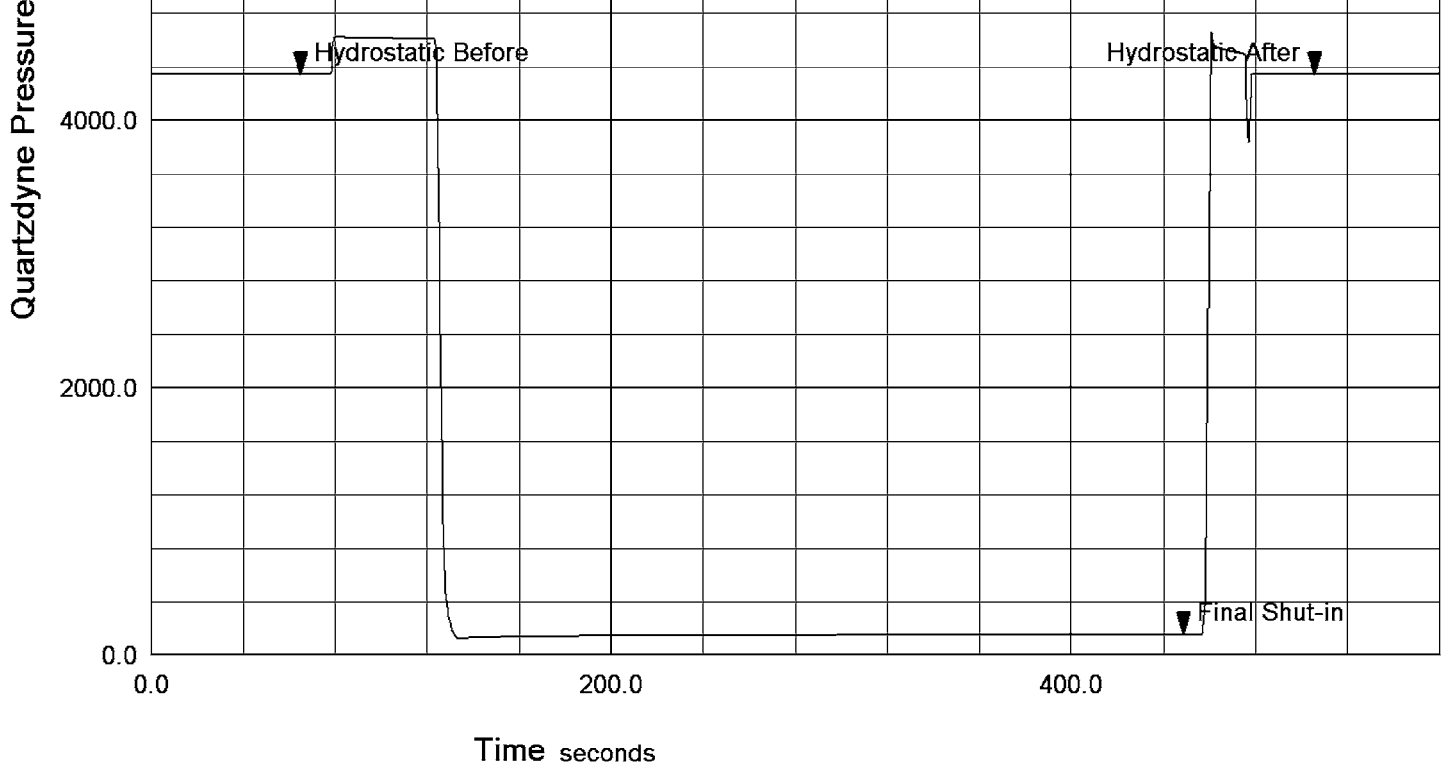
Time Based Data - Notional Logging Speed 10.00 metres/min  
 Plotted on 06-OCT-2005 13:47  
 Filename: C:\Data\Childers Cove\MCG098MFT017\_24.dta  
 Recorded on 05-OCT-2005 05:07  
 System Configuration Dates: Logged 17-JUN-2004: Plotted 23-AUG-2004:

↑ Pretest 11 at 2590.51 m ↑

### Pressure - Time Plot

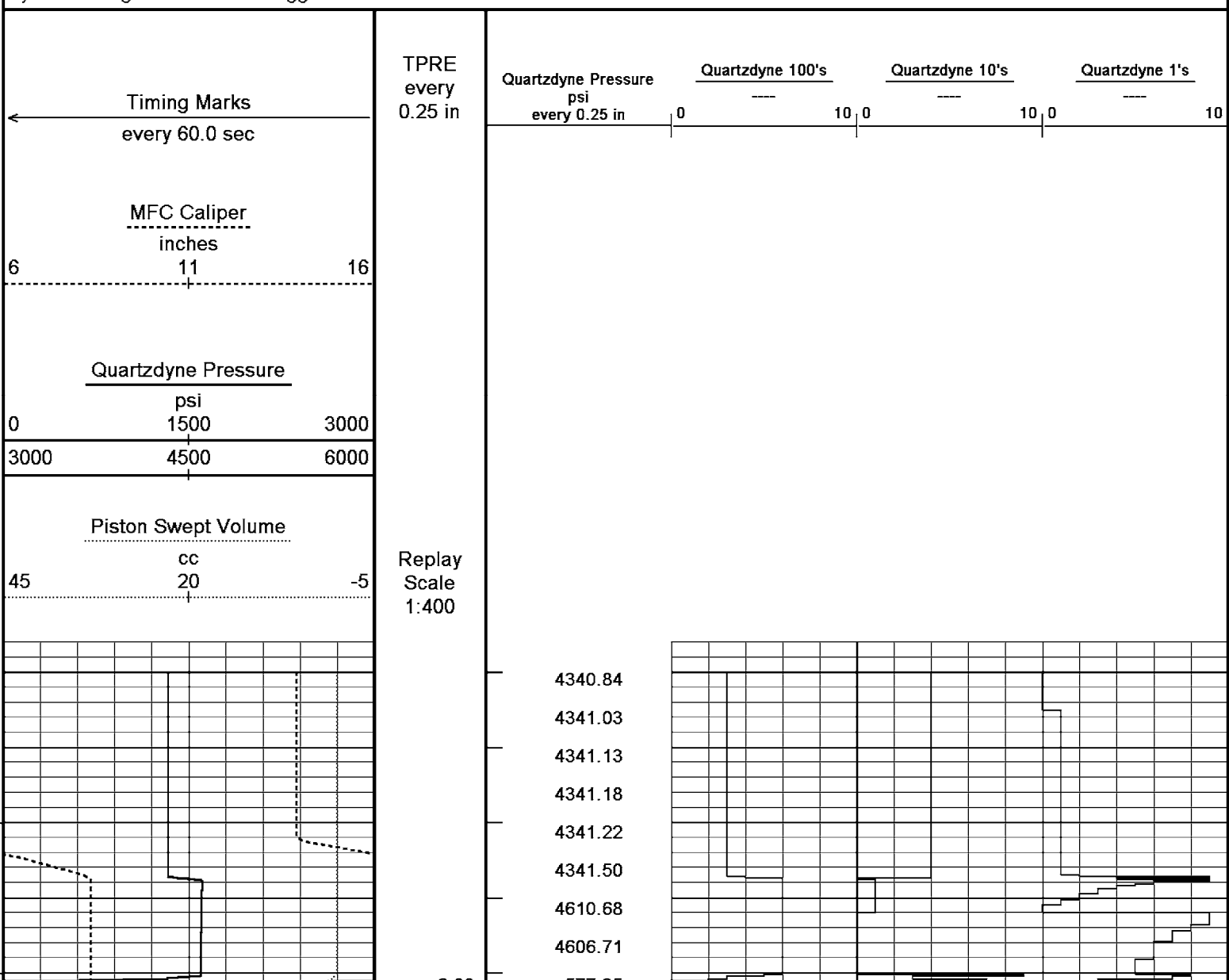
File: C:\Data\Childers Cove\MCG098MFT017\_25.dta  
 Run Id: Pretest 12 at 2612.09 m  
 Test Number: 12  
 File Date: 04-OCT-2005 21:05:04

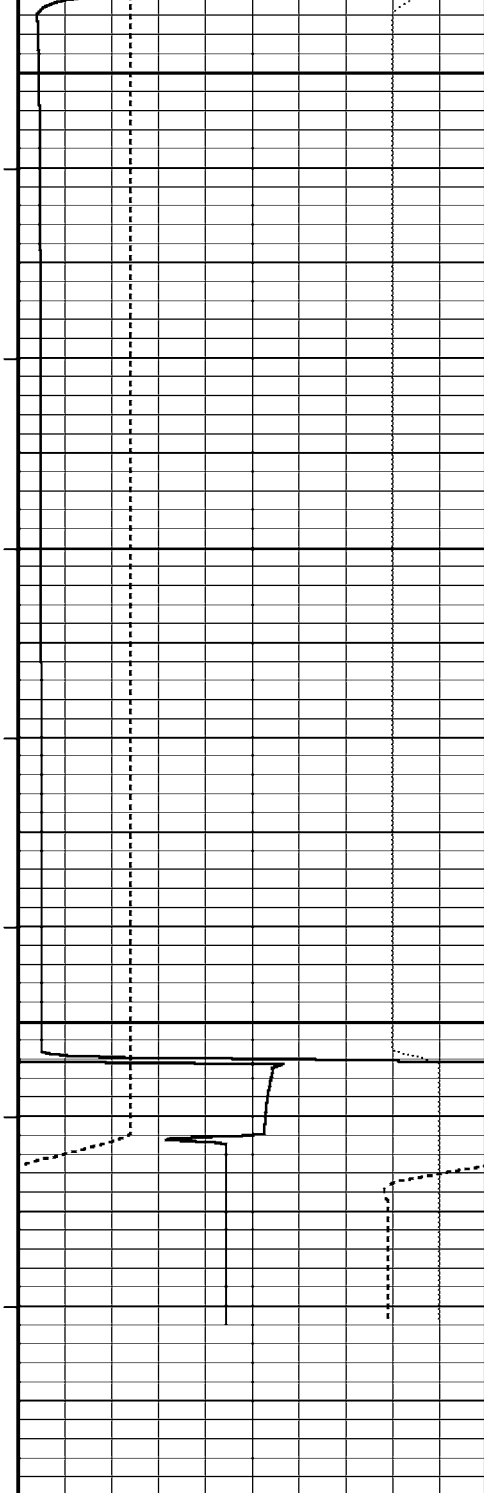




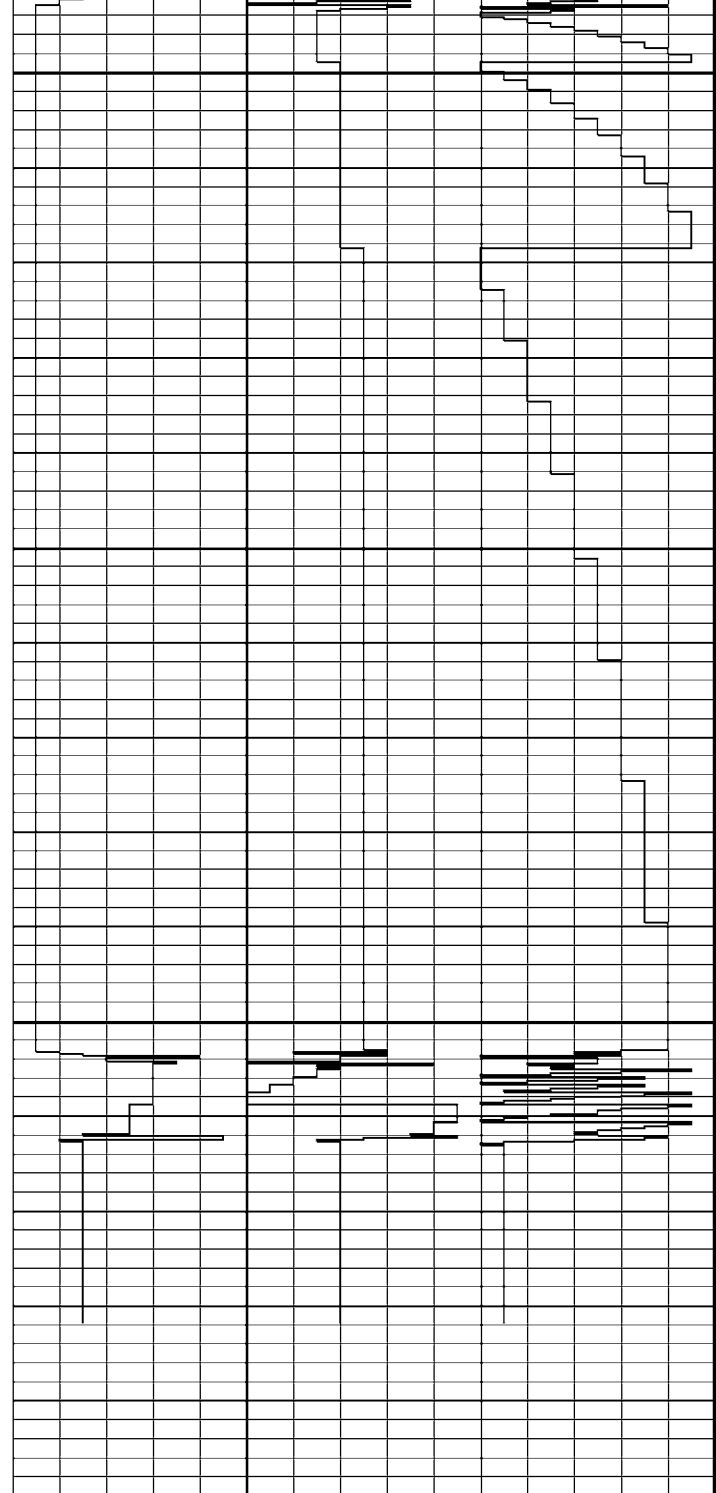
Pretest 11 at 2590.51 m

Time Based Data - Notional Logging Speed 10.00 metres/min  
 Plotted on 06-OCT-2005 13:47  
 Filename: C:\Data\Childers Cove\MCG098MFT017\_24.dta  
 Recorded on 05-OCT-2005 05:07  
 System Configuration Dates: Logged 17-JUN-2004; Plotted 23-AUG-2004;





20.99	136.98
36.03	142.87
51.63	146.13
66.59	148.14
82.22	149.69
97.19	150.85
112.21	151.81
127.82	152.66
142.79	153.38
158.43	154.04
173.42	154.61
188.43	155.14
204.01	155.64
219.01	156.07
234.62	156.49
249.62	156.88
264.61	157.23
280.20	157.59
295.22	157.91
310.81	158.23
325.82	158.53
4.79	224.92
20.41	4601.77
35.40	4341.70
50.99	4341.59
66.01	4341.23
81.02	4341.14



← Timing Marks every 60.0 sec

MFC Caliper inches  
6                      11                      16

Quartzdyne Pressure psi  
0                      1500                      3000  
3000                      4500                      6000

Piston Swept Volume cc  
45                      20                      -5

TPRE every 0.25 in

Replay Scale

Quartzdyne Pressure psi every 0.25 in      Quartzdyne 100's      Quartzdyne 10's      Quartzdyne 1's

0      10,0      10,0      10

↑ Pretest 11 at 2590.51 m ↑

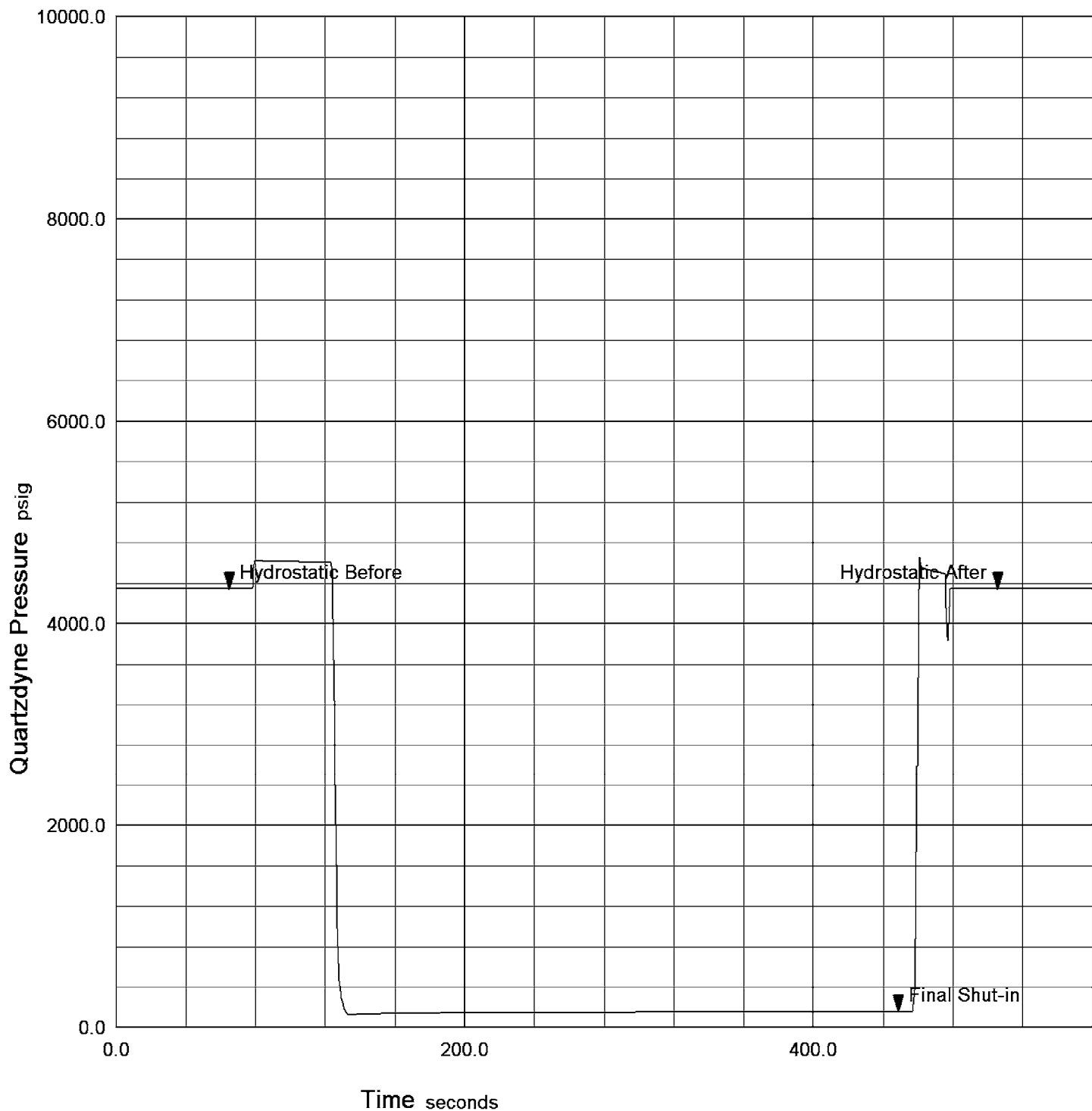
### Pressure - Time Plot

File: C:\Data\Childers Cove\MCG098MFT017\_25.dta

File Date: 04-OCT-2005 21:05:04

Run Id: Pretest 12 at 2612.09 m

Test Number: 12



↓ Pretest 12 at 2612.09 m ↓



Timing Marks  
every 60.0 sec

MFC Caliper  
inches  
6 11 16

Quartzdyne Pressure  
psi  
0 1500 3000  
3000 4500 6000

Piston Swept Volume  
cc  
45 20 -5

TPRE  
every  
0.25 in

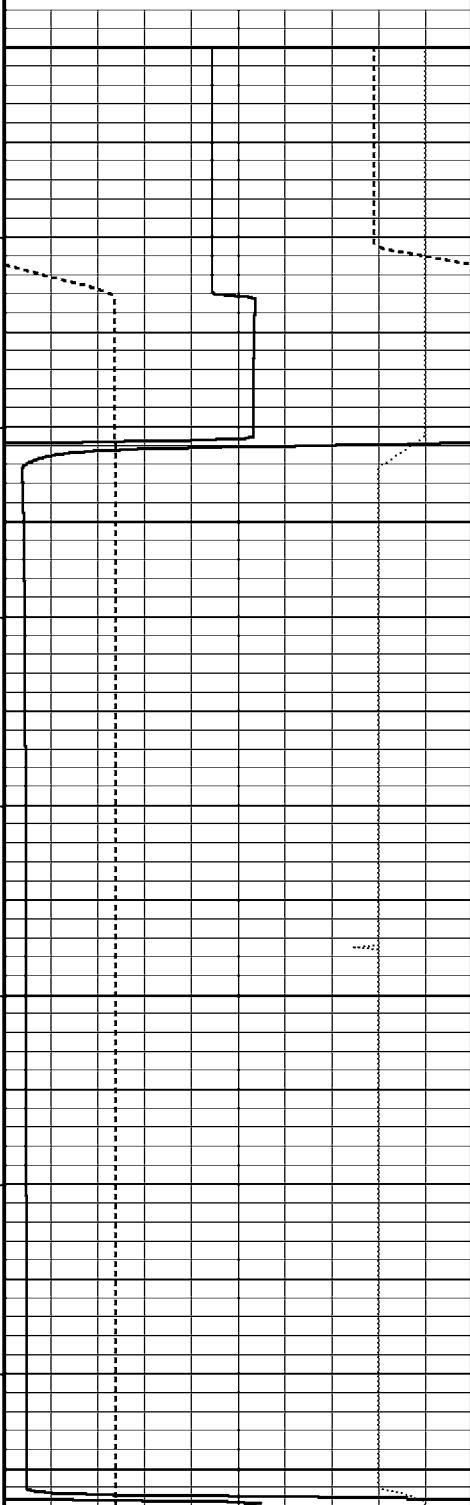
Quartzdyne Pressure  
psi  
every 0.25 in

Quartzdyne 100's 10,0 10,0 10

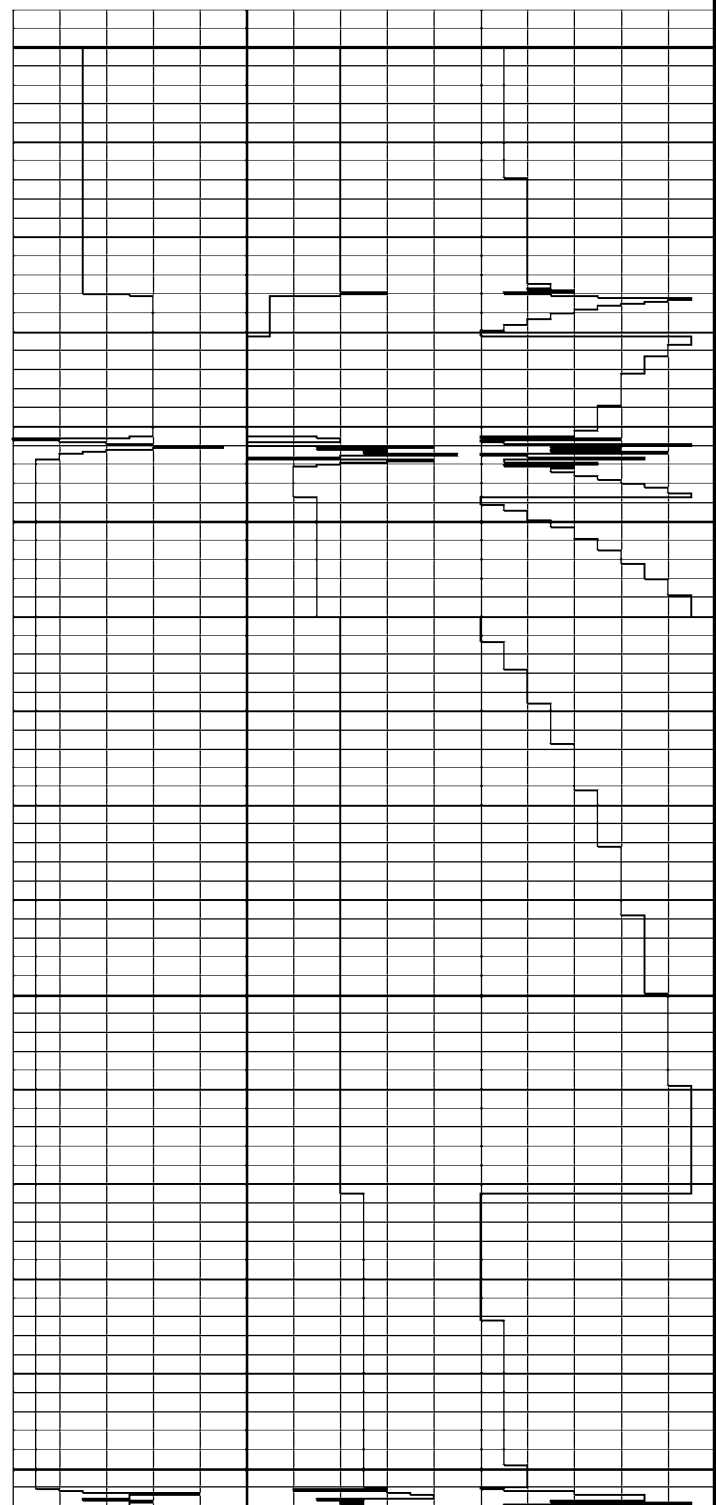
Quartzdyne 10's

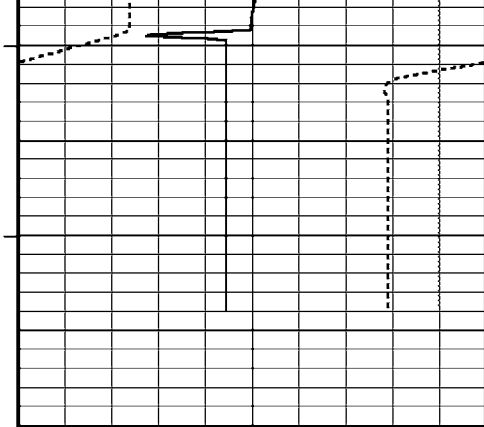
Quartzdyne 1's

Replay  
Scale  
1:400

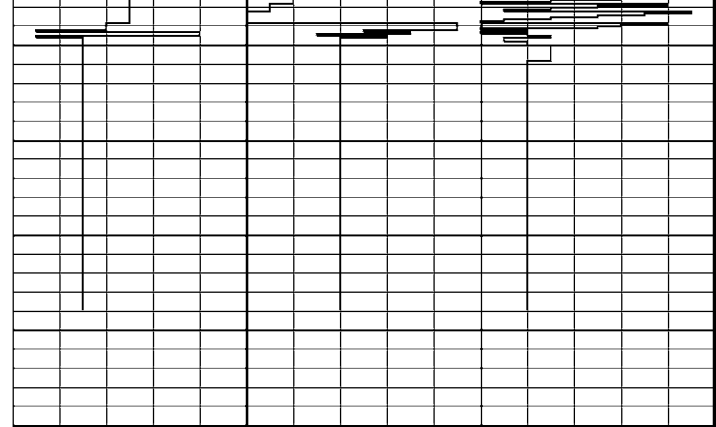


4341.38	
4341.23	
4341.68	
4342.16	
4342.33	
4615.95	
4608.85	
4606.55	
6.01	2401.06
21.02	128.59
36.01	134.97
51.60	138.54
66.60	140.78
82.20	142.45
97.19	143.71
112.21	144.75
127.83	145.66
142.79	146.42
158.39	147.12
173.41	147.73
188.40	148.28
204.01	148.81
219.01	149.29
234.62	149.73
249.59	150.16
264.62	150.54
280.20	150.92
295.20	151.26
310.79	151.59
325.83	151.91
4.76	4337.31





20.36	4152.51
35.38	4342.65
50.96	4342.45
65.99	4342.27
80.98	4342.19
96.56	4342.13



Timing Marks  
every 60.0 sec

MFC Caliper  
inches  
6 11 16

Quartzdyne Pressure  
psi  
0 1500 3000  
3000 4500 6000

Piston Swept Volume  
cc  
45 20 -5

TPRE  
every  
0.25 in

Replay  
Scale  
1:400

Quartzdyne Pressure  
psi  
every 0.25 in

Quartzdyne 100's  
0 10 0

Quartzdyne 10's  
0 10 0

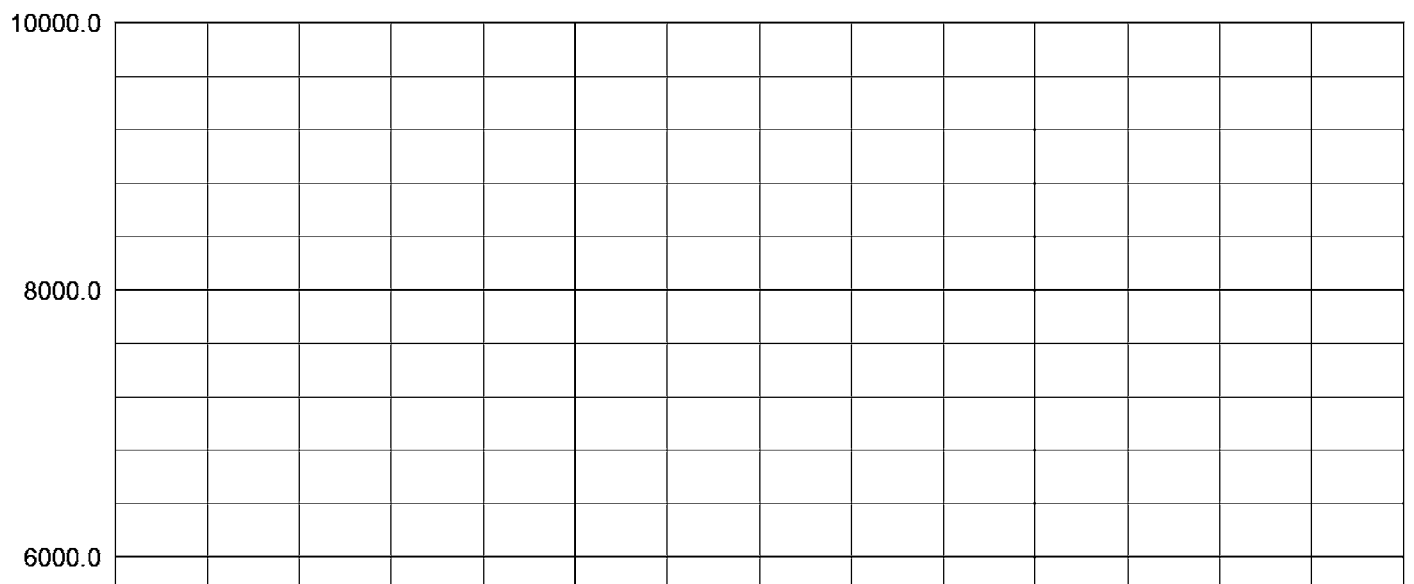
Quartzdyne 1's  
0 10

Time Based Data - Notional Logging Speed 10.00 metres/min  
 Plotted on 06-OCT-2005 13:47  
 Filename: C:\Data\Childers Cove\MCG098MFT017\_25.dta  
 Recorded on 05-OCT-2005 05:21  
 System Configuration Dates: Logged 17-JUN-2004: Plotted 23-AUG-2004:

↑ Pretest 12 at 2612.09 m ↑

### Pressure - Time Plot

File: C:\Data\Childers Cove\MCG098MFT017\_26.dta  
 Run Id: Pretest 13 at 2611.90 m  
 Test Number: 13  
 File Date: 04-OCT-2005 21:05:10



Quartzdyne Pressure psig

4000.0

2000.0

0.0

0.0

200.0

400.0

Time seconds

Hydrostatic Before

Hydrostatic After

Final Shut-in

Pretest 13 at 2611.90 m

Time Based Data - Notional Logging Speed 10.00 metres/min

Plotted on 06-OCT-2005 13:47

Filename: C:\Data\Childers Cove\MCG098MFT017\_26.dta

Recorded on 05-OCT-2005 05:31

System Configuration Dates: Logged 17-JUN-2004: Plotted 23-AUG-2004:

Timing Marks  
every 60.0 sec

MFC Caliper  
inches  
6 11 16

Quartzdyne Pressure  
psi  
0 1500 3000  
3000 4500 6000

Piston Swept Volume  
cc  
45 20 -5

TPRE  
every  
0.25 in

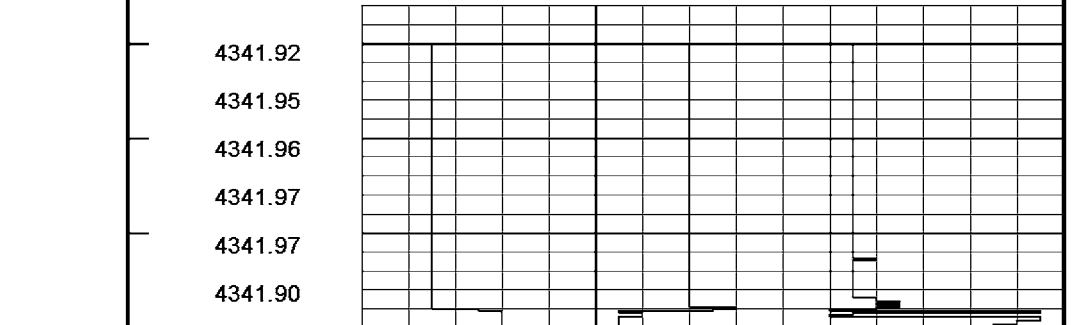
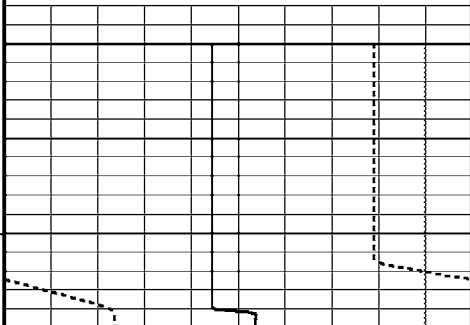
Replay  
Scale  
1:400

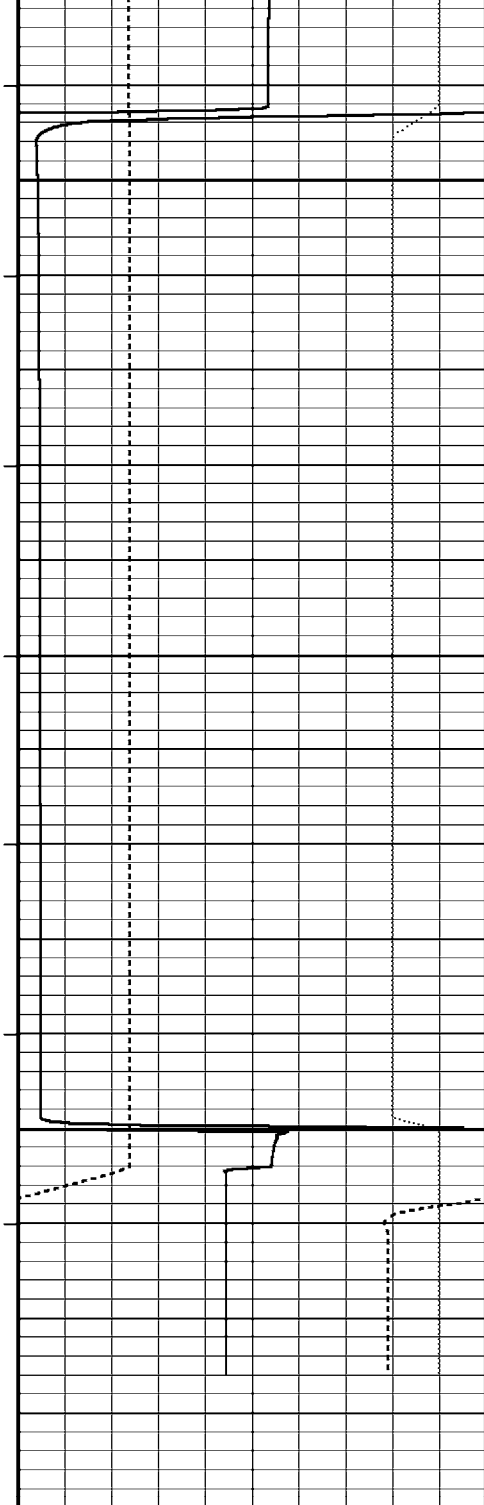
Quartzdyne Pressure  
psi  
every 0.25 in

Quartzdyne 100's  
0 10.0

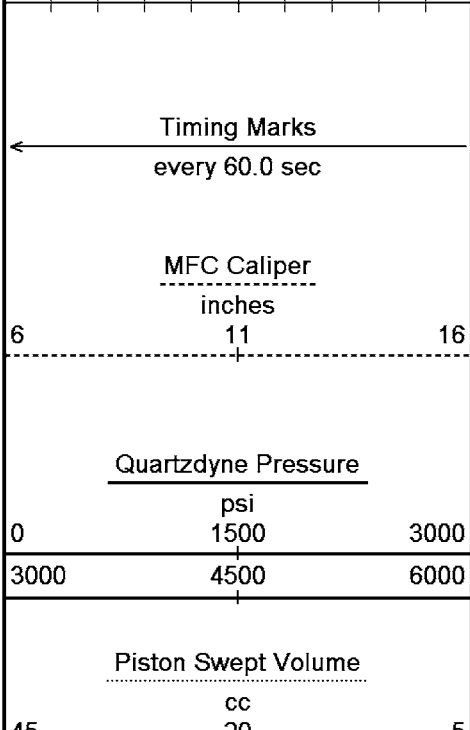
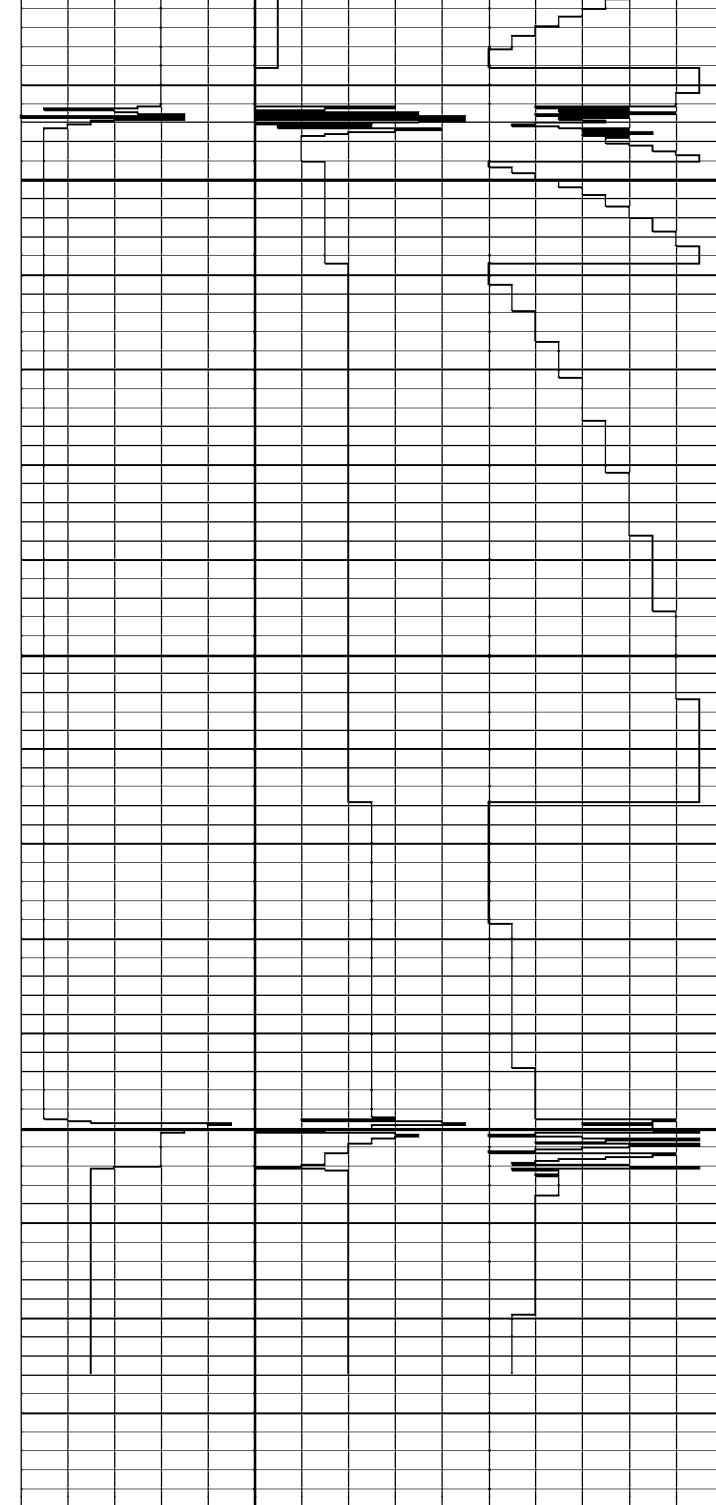
Quartzdyne 10's  
10.0

Quartzdyne 1's  
10

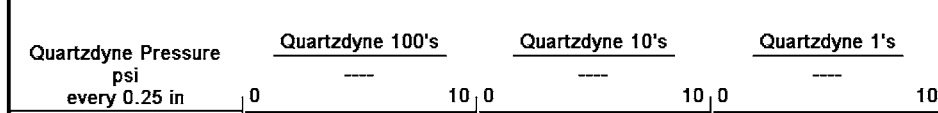




15.00	4610.79
30.01	127.51
45.60	135.04
60.63	138.95
76.23	141.33
91.20	143.05
106.24	144.30
121.83	145.34
136.82	146.23
152.43	146.98
167.40	147.66
182.42	148.26
198.04	148.79
213.03	149.30
228.64	149.76
243.59	149.76
258.64	150.19
274.22	150.59
289.22	150.95
304.81	151.32
1.83	151.66
16.81	151.98
32.40	152.27
47.39	4633.95
63.00	4342.65
78.02	4342.26
	4342.03
	4341.91



TPRE every 0.25 in



Replay Scale

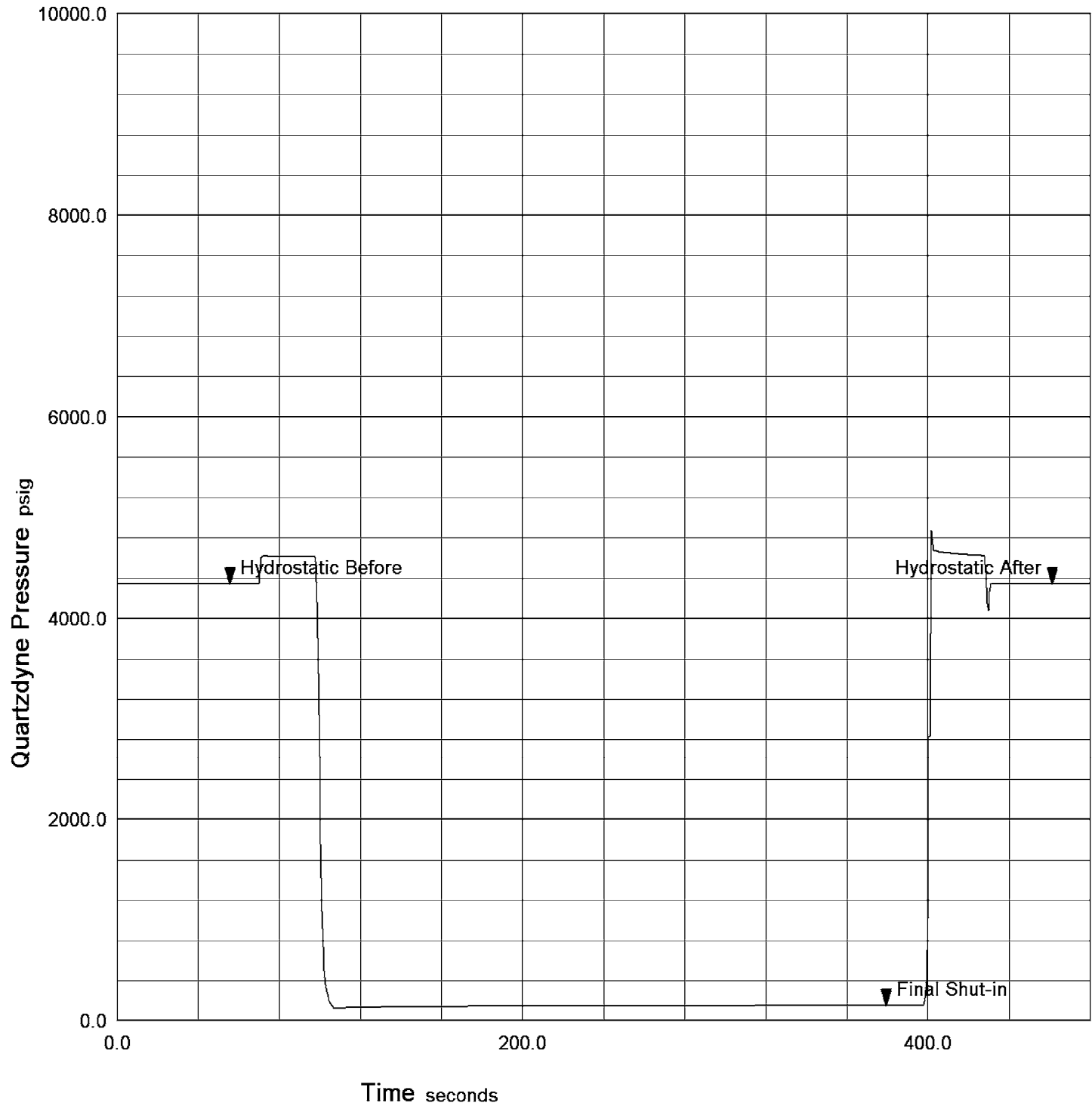
### Pressure - Time Plot

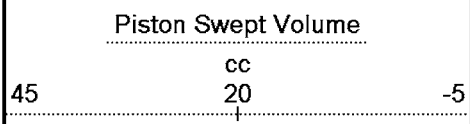
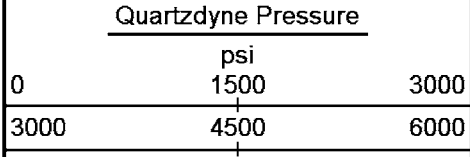
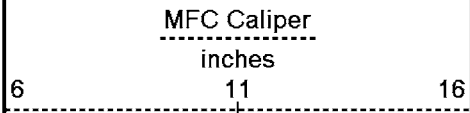
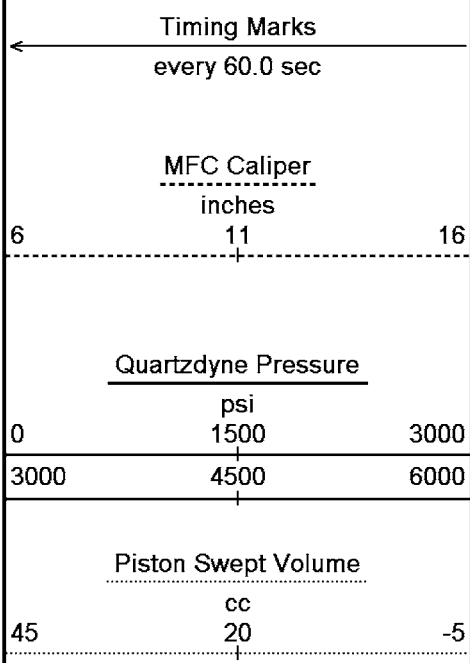
File: C:\Data\Childers Cove\MCG098MFT017\_27.dta

File Date: 04-OCT-2005 21:05:18

Run Id: Pretest 14 at 2616.80 m

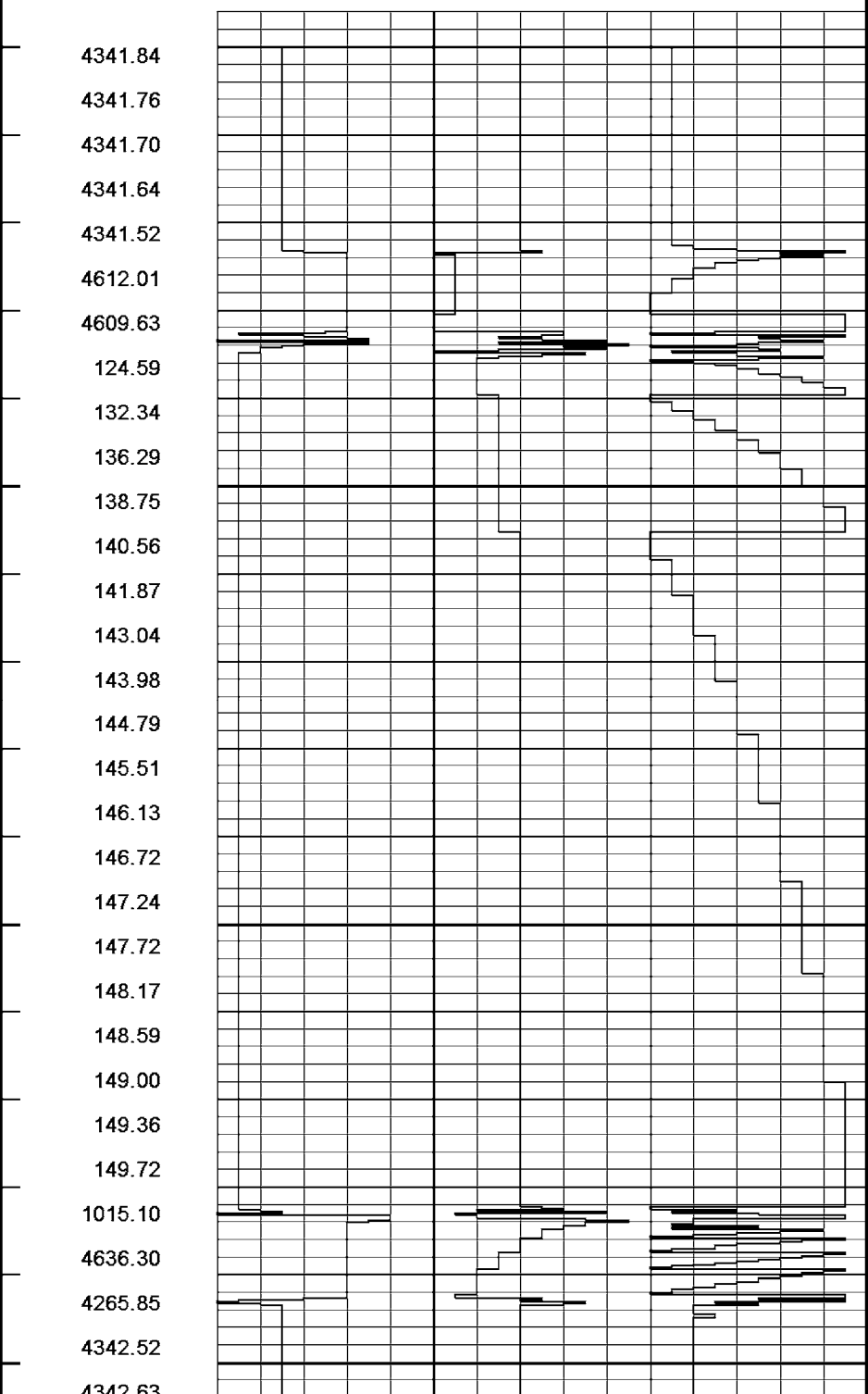
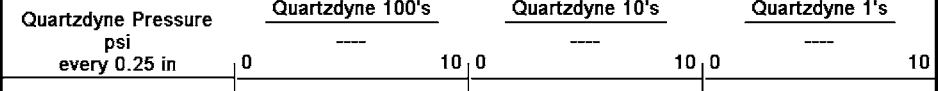
Test Number: 14



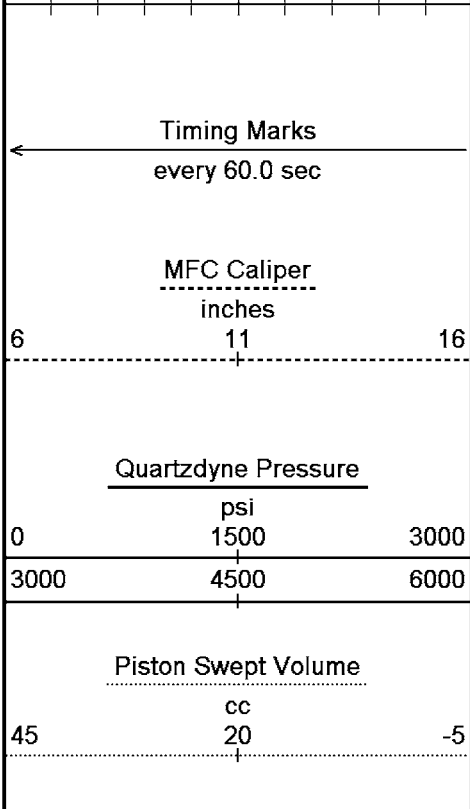


TPRE every 0.25 in

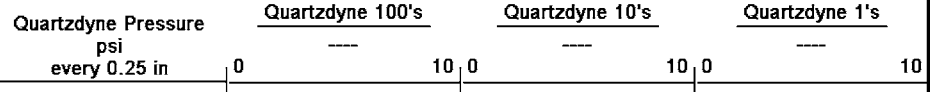
Replay Scale 1:400



84.33 4342.55  
 80.38 4342.55  
 95.39 4342.49



TPRE  
every  
0.25 in



Replay  
Scale  
1:400

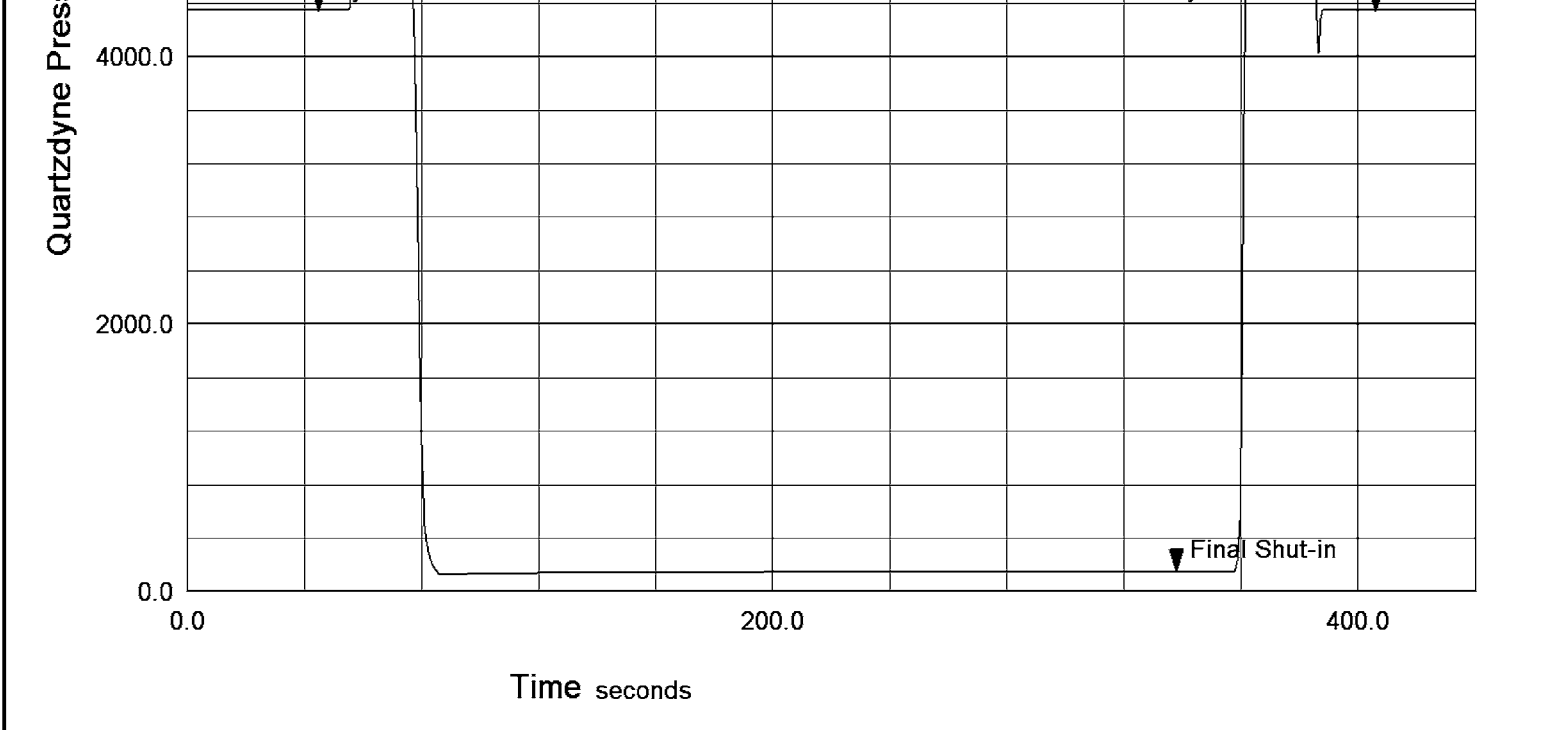
Time Based Data - Notional Logging Speed 10.00 metres/min Plotted on 06-OCT-2005 13:47  
 Filename: C:\Data\Childers Cove\MCG098MFT017\_27.dta Recorded on 05-OCT-2005 05:44  
 System Configuration Dates: Logged 17-JUN-2004: Plotted 23-AUG-2004:

↑ Pretest 14 at 2616.80 m ↑

### Pressure - Time Plot

File: C:\Data\Childers Cove\MCG098MFT017\_28.dta File Date: 04-OCT-2005 21:05:24  
 Run Id: Pretest 15 at 2617.11 m  
 Test Number: 15





↓ Pretest 15 at 2617.11 m ↓

Time Based Data - Notional Logging Speed 10.00 metres/min Plotted on 06-OCT-2005 13:47  
 Filename: C:\Data\Childers Cove\MCG098MFT017\_28.dta Recorded on 05-OCT-2005 05:55  
 System Configuration Dates: Logged 17-JUN-2004: Plotted 23-AUG-2004:

← Timing Marks every 60.0 sec

---

MFC Caliper  
inches

6 11 16

---

Quartzdyne Pressure  
psi

0 1500 3000

3000 4500 6000

---

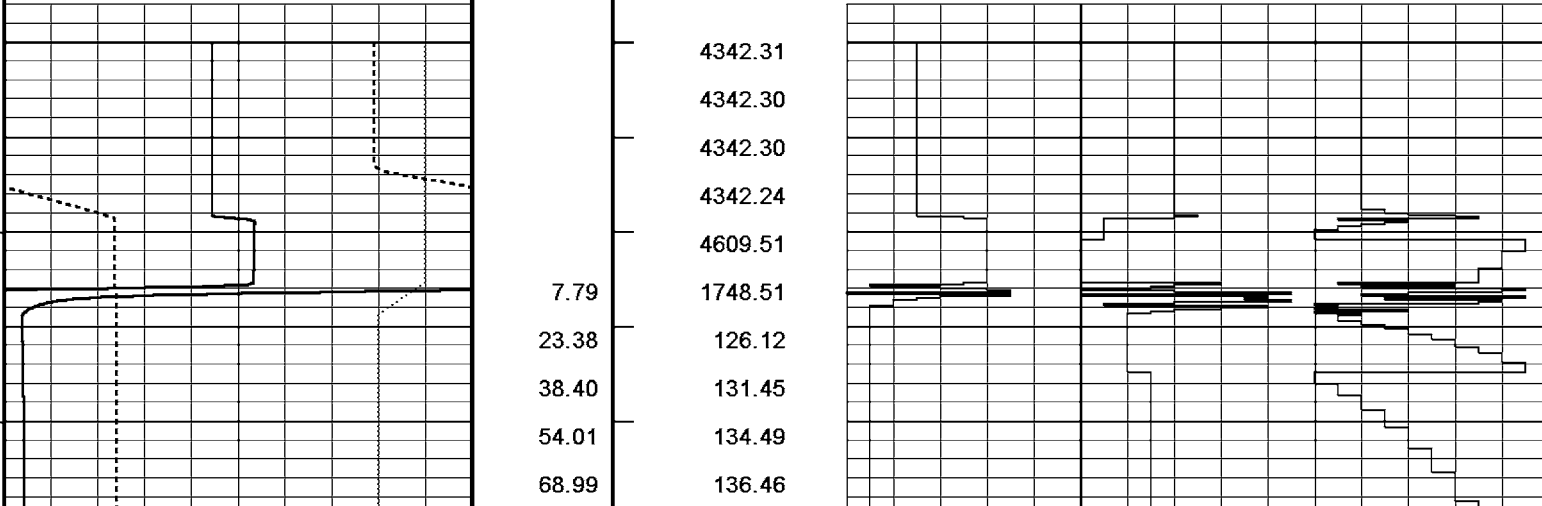
Piston Swept Volume  
cc

45 20 -5

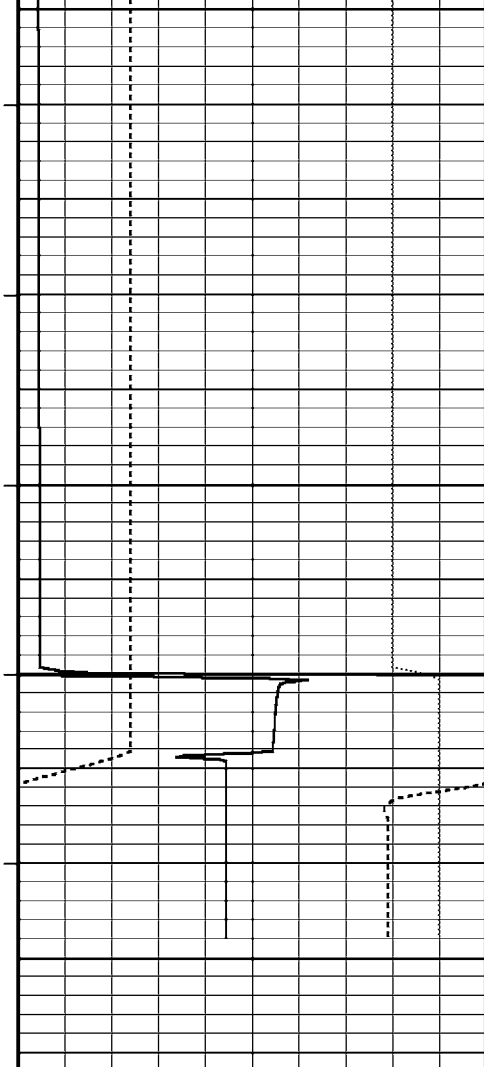
TPRE every 0.25 in

Quartzdyne Pressure psi every 0.25 in	Quartzdyne 100's	Quartzdyne 10's	Quartzdyne 1's
0	---	---	---
10	0	---	---
10	0	0	---
10	0	0	0

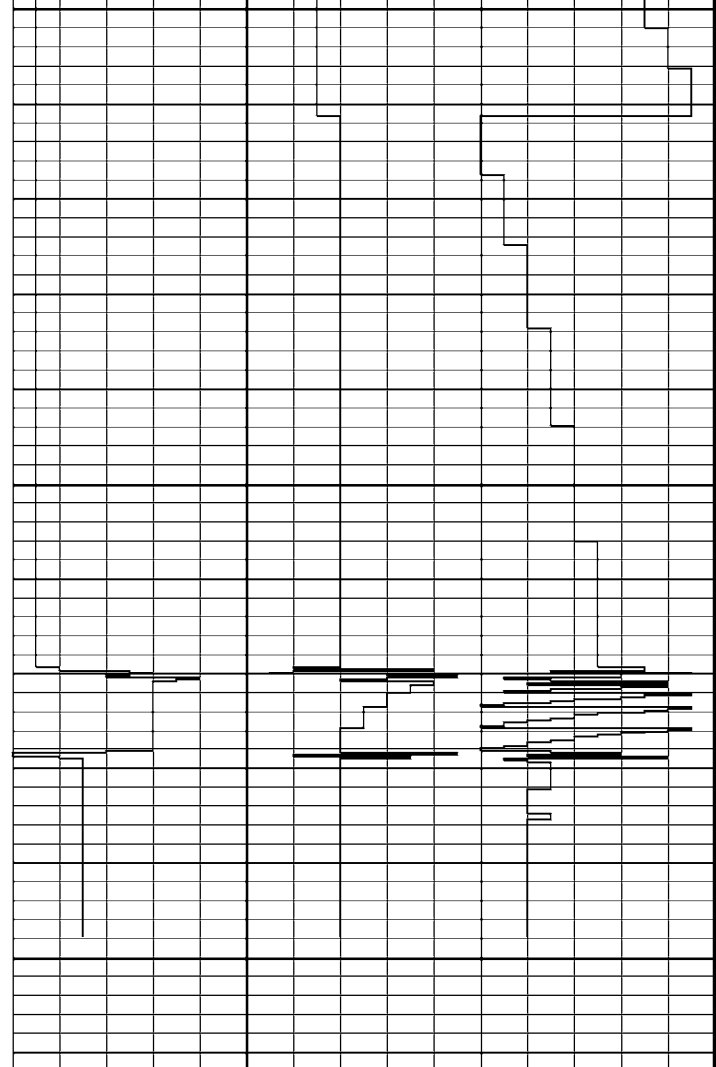
Replay Scale 1:400







83.99	137.94
99.60	139.16
114.57	140.11
130.18	140.95
145.17	141.65
160.20	142.28
175.79	142.87
190.80	143.37
206.40	143.87
221.41	144.32
236.37	144.73
251.99	145.14
266.97	145.51
0.61	145.87
15.60	4663.16
30.60	4640.79
46.23	4342.91
61.23	4342.83
76.84	4342.72



Timing Marks  
every 60.0 sec

MFC Caliper  
inches  
6 11 16

Quartzdyne Pressure  
psi  
0 1500 3000  
3000 4500 6000

Piston Swept Volume  
cc  
45 20 -5

TPRE  
every  
0.25 in

Replay  
Scale  
1:400

Quartzdyne Pressure  
psi  
every 0.25 in

Quartzdyne 100's  
0 10 0

Quartzdyne 10's  
0 10 0

Quartzdyne 1's  
0 10

Time Based Data - Notional Logging Speed 10.00 metres/min  
 Plotted on 06-OCT-2005 13:47  
 Filename: C:\Data\Childers Cove\MCG098MFT017\_28.dta  
 Recorded on 05-OCT-2005 05:55  
 System Configuration Dates: Logged 17-JUN-2004: Plotted 23-AUG-2004:

↑ Pretest 15 at 2617.11 m ↑

BEFORE SURVEY CALIBRATION

C:\Data\Childers Cove\MCG098MFT017\_18.dta

General Constants All 000

General Parameters  
Mud Resistivity 0.250 ohm-metres  
Mud Resistivity Temperature 17.100 degrees C  
Water Level 0.000 metres  
Density/Neutron Processing Wet Hole

Hole/Annular Volume and Differential Caliper Parameters  
HVOL Caliper 1 Bit Size  
HVOL Caliper 2 Bit Size  
Annular Volume Diameter 7.000 inches  
Caliper for Differential Caliper None

Rwa Parameters  
Porosity used N/A  
Resistivity used N/A  
RWA Constant A N/A  
RWA Constant M N/A

Quartzdyne Calibration Constants and Coefficients MFT 017

Serial Number 156287  
Calibration Date 11-Oct-02  
Temperature polynomial order 3  
Pressure polynomial order 3  
Temperature scaling factor 0.0100000000000  
Pressure scaling factor 0.0100000000000  
Temperature offset frequency 52016.0000000000000  
Pressure offset frequency 16521.0000000000000  
Span adjustment 1.0000000000000  
Offset adjustment 0.000000000000e+000

	T0	T1	T2	T3	T4
P0	1.15388e+001	-5.29094e-001	-2.21551e-002	6.67977e-006	0.00000e+000
P1	4.25443e+001	-2.18004e-002	2.94679e-005	-4.87947e-008	0.00000e+000
P2	-2.01669e-003	1.02828e-005	-3.27841e-008	5.19870e-011	0.00000e+000
P3	7.45114e-007	-1.15862e-009	4.16808e-011	3.20970e-014	0.00000e+000
P4	0.00000e+000	0.00000e+000	0.00000e+000	0.00000e+000	0.00000e+000

Caliper Calibration MFT 017

Base Calibration on 6-SEP-2005 20:29  
Field Calibration on 4-OCT-2005 13:57

Base Calibration	Reading No	Measured	Calibrator Size (in)
	1	4343	4.00
	2	4919	6.00
	3	5807	8.00
	4	7061	10.00
	5	0	0.00
	6	N/A	N/A

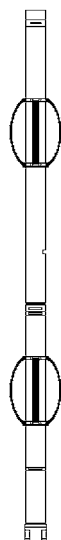
Field Calibration	Measured Caliper (in)	Actual Caliper (in)
	7.92	8.00

DOWNHOLE EQUIPMENT

C:\Data\Childers Cove\MCG098MFT017\_18.dta

Compact Gamma  
MCG 98 Length: 2.65 m Weight: 63.9 lb

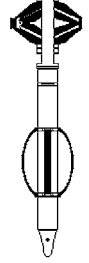
Compact Repeat Formation Tester  
MFT 17 Length: 4.17 m Weight: 112.4 lb



- Tool Zero (2.15m from bottom)
- 0.00 m PSVL - Piston Swept Volume
- 0.00 m QONE - Quartzdyne 1's
- 0.00 m QTEN - Quartzdyne 10's
- 0.00 m QHUN - Quartzdyne 100's
- 0.00 m QDPF - Quartzdyne Pressure
- 0.00 m FPMC - MFP Motor Current
- 0.00 m ECCP - MEC Caliper

Pressure Bung + Hole Finder  
 HFS 3 Length: 0.28 m Weight: 6.6 lb

Total Length: 7.10 m Weight: 183.0 lb



0.00 m FCMC - MFC Motor Current

All measurements relative to tool zero.

**COMPANY** ORIGIN ENERGY RESOURCES LIMITED  
**WELL** CHILDERS COVE 1  
**FIELD** ONSHORE OTWAY BASIN  
**PROVINCE/COUNTY** VICTORIA  
**COUNTRY/STATE** AUSTRALIA

Elevation Kelly Bushing	51.50	metres	First Reading	2617.10	metres
Elevation Drill Floor	51.50	metres	Depth Driller	2658.00	metres
Elevation Ground Level	46.20	metres	Depth Logger	2618.50	metres



**FORMATION TESTER**  
**TIME LOG**  
**BUILD-UP PLOTS**